

Passenger Side Blind Spot Monitoring System (Kit # 9002-2902v2)

Please read thoroughly before starting installation and check that kit contents are complete.

Items Included in the Kit:

Adjustable angle camera pods
Chassis harness
Double sided tape/gaskets
Mounting screws
2 Screw hole caps
Angle adjustment tools
These instructions

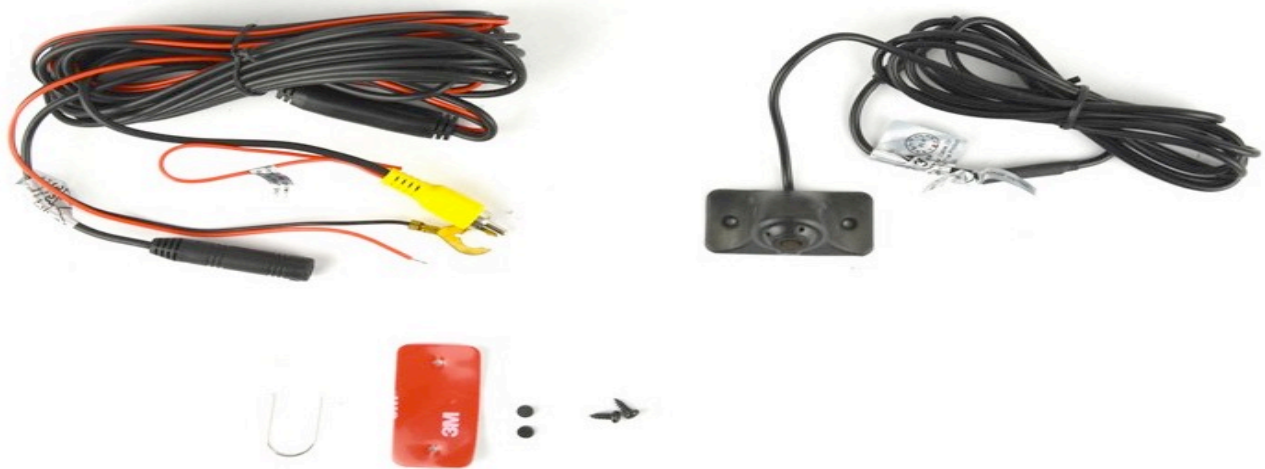
Tools & Supplies Needed:

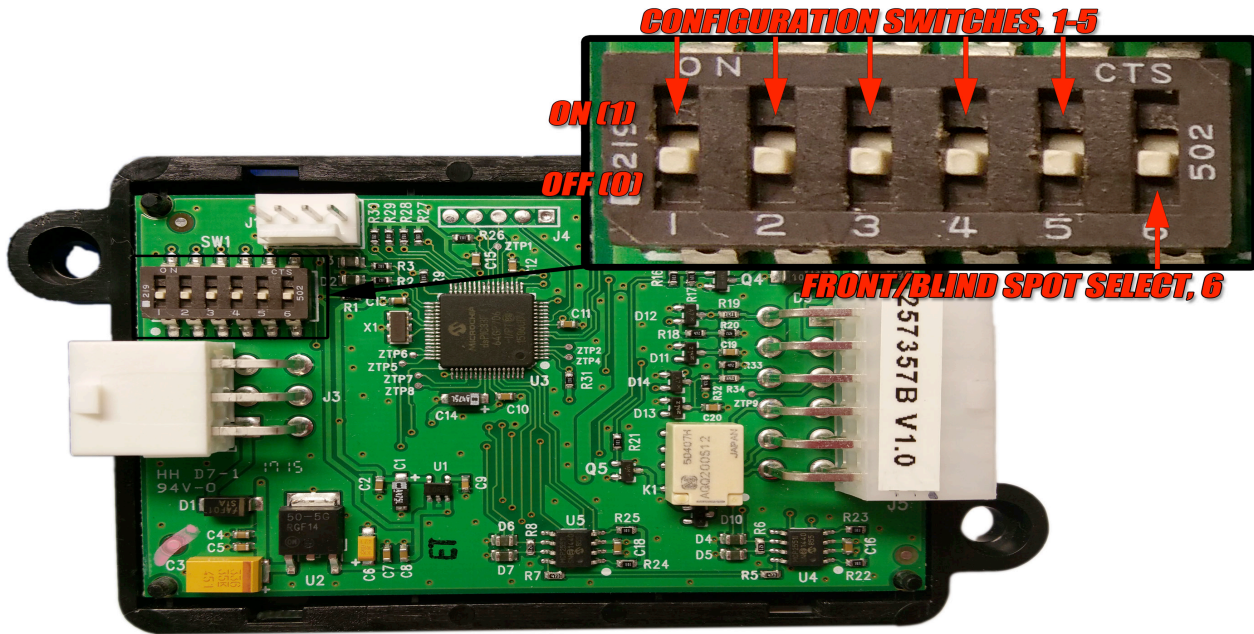
Wire strippers
Wire cutters
Electrical tape
Zip ties
Plastic panel removal tools
Digital Volt Meter / BCM safe test light
Screwdriver
Socket set
Wrench

Safety Precautions:

- Work in well ventilated area that is clear of obstructions.
- Secure vehicle with tire chucks in both front and rear of tires.
- Turn vehicle accessories OFF and ensure ignition key is in OFF position.
- Wear safety goggles and snug fitting clothes.
- Use tools only for their intended purpose and which are in good repair.
- Only perform this task if confidence, skill, and physical ability permit.

NOTE: We strive to provide accurate and up-to-date installation instructions. For the latest full color instructions, as well as an installation video, please visit www.brandmotion.com





Make sure to adjust the number 6 dip switch to the DOWN/OFF position, when using Brandmotion dual camera interfaces 9002-2780, 9002-2781, 9002-2782 or 9002-2783.

1. Remove the inter door panel to gain access to the wiring and side view mirror mounting bolts.
2. Carefully remove the mirror glass from the mirror. Each vehicle is different; consult the vehicles service guide for how to steps.
3. Clean the bottom of the mirror then attach the 3m double-sided tape to the bottom of the mirror where the camera should be mounted.
4. Remove the mirror from the vehicle and housing from the vehicle.
5. Drill 2 pilot holes for the mounting screws and drill a hole in the center of the double-sided tape for the harness to be ran through.
6. Run the camera harness into the mirror and through the arm of the mirror, into the door.
7. Attach the camera to the mirror with the double-sided tape.
8. Screw in the 2 mounting screws into the holes in the camera.
9. Snap in the two-screw hole mounting covers.
10. Run the camera harness into the vehicle through the door boot.
11. Connect the camera to the harness with the power and RCA connection.
12. Repeat for the other the door.

13. Connect the Yellow video RCA to the Red Aux video input RCA on the module harness.
14. Connect the Green Aux trigger wire to the right negative turn signal wire. (If the turn signal wire is a positive we will need to connect a relay inline).
15. The interface (not included) will trigger the camera whenever the right turn signal is turned on. (The camera will stay on for a max of 20 seconds). To trigger again, turn off turn signal and turn back on.
16. Check the angle and view, if the angle needs to be changed use supplied tool to adjust the angle of the camera.