

**Chevrolet Express/GMC Savana Camera Installation Instructions, 2008 – current
(Kit # 9002-7607)**

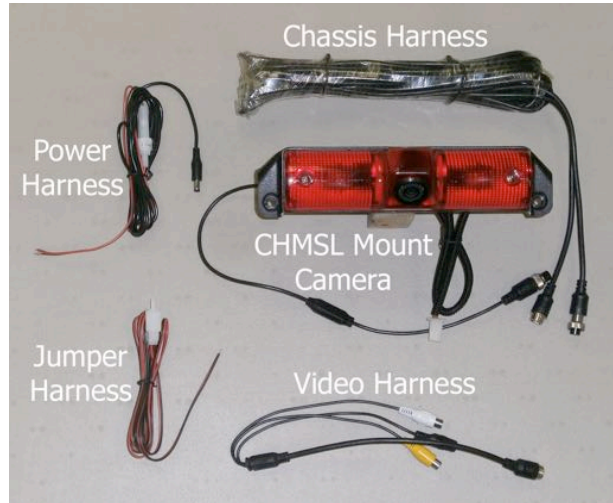
Please read thoroughly before starting installation and check that kit contents are complete.

Items Included in Kit:

- CHMSL Mount Camera and Harness
- Video Harness
- Chassis Harness
- Power Harness
- Jumper Harness
- Female to Male RCA Adaptor (not shown at right)
- These Instructions

Tools & Supplies Needed:

- Multi-meter or computer-safe test light
- Plastic Trim Removal Tool
- Electrical Tape or Heat Shrink Tubing
- Soldering Iron (recommended)
- Solder (recommended) or T-Taps
- Wire Ties (recommended)
- Ground Eyelet (recommended)

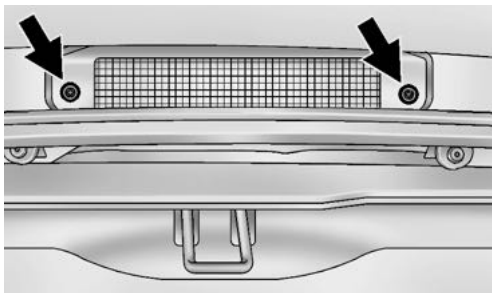


Safety Precautions:

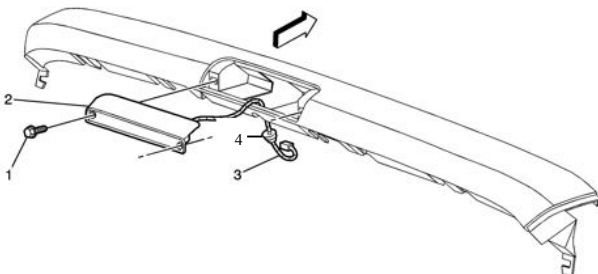
- Work in a well ventilated area that is clear of obstructions.
- Secure vehicle with tire chucks in both front and rear of tires.
- Turn vehicle accessories OFF and ensure ignition key is in OFF position.
- Wear safety goggles and snug fitting clothes.
- Use tools only for their intended purpose and which are in good repair.
- Only perform this task if confidence, skill, and physical ability permit.

NOTE: We strive to provide accurate and up-to-date installation instructions. The latest full color instructions can be accessed at www.brandmotion.com

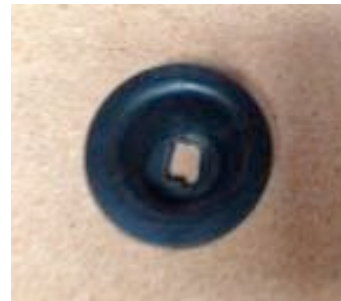
Step 1: Use a Phillips screwdriver to remove two screws retaining the Center High-Mount Stop Lamp or CHMSL (commonly known as the Third Brake Light.) Save screws to attach Camera.



Step 2: Disconnect the brake lamp socket from the CHMSL and remove the CHMSL.



Step 3: Cut the rubber CHMSL harness grommet (shown as part #4 at Step 2) at its base and remove.



Step 4: Thread Camera Harness video and jumper connector ends through the grommet and through the CHMSL opening. Recommended: Apply a dab of silicone to retain grommet in place and maintain a water tight seal.



Step 5: Connect Camera Harness jumper connector to supplied Jumper Harness.



Step 6: Connect red wire of Jumper Harness to light blue wire of CHMSL brake lamp (12+ brake lamp power) and black wire to chassis ground (solder recommended or T-Taps).

Wire Color	Polarity	Function	Description	Location
Red	12v +	CHMSL illumination	Displays 12 volts + with brakes applied	CHMSL light blue wire
Black	(-)	Ground	Brake light ground	CHMSL black wire

Step 7: Attach supplied Camera using existing screws.
CAUTION: Do not over tighten.

Step 8: Connect Camera Harness video connector to supplied Chassis Harness.



Step 9: Route Chassis Harness forward along the driver's side wire channel at the base of the roof and toward your video display / Navigation display.



Step 10: Connect Chassis Harness to supplied Video Harness and route beneath headliner and down drivers side A-pillar. (Note: connection is same as shown in Step 8.)

Step 11: (If necessary) Connect supplied Female to Male RCA Adaptor to yellow RCA Video Harness plug.



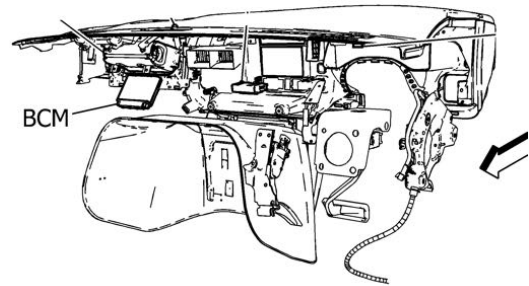
INSTALLATION INSTRUCTIONS

Step 12: Connect yellow RCA plug of Video Harness to "Camera IN" on the video / Navigation display. (NOTE: The white RCA plug is not used in this application.)

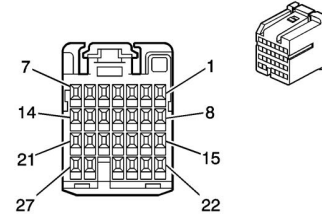
Step 13: Connect Camera Harness power connector to the supplied Power Harness.



Step 14: Locate the Body Control Module (BCM) under the passenger side of the dash.



Step 15: Splice the red wire from the Power Harness to pink 12v+ Ignition power wire in cavity 2 of Body Control Module (BCM) connector X1.



Step 16: Add a Ground Eyelet (recommended) to the black wire from the Power Harness and use a screw or nut to attach it to chassis ground (solder recommended or T-Taps).

Wire Color	Polarity	Function	Description	Location
Red	12v +	Camera power	Displays 12 volts + with Ignition ON	BCM Connector cavity 2 - Pink wire
Black	(-)	Ground	Ground	Chassis

Step 17: Test the system. Inspect that all connections are proper and secure. Clear all loose items removed from area around the vehicle. Turn ignition key ON and shift into Reverse to test system. The video image from the Camera should appear in your display / Navigation display.

Step 18: Secure Chassis, Video, and Power Harnesses to existing vehicle wiring and reassemble vehicle by following your disassembly steps in reverse. Avoid binding or otherwise damaging the harnesses. (Recommended: Wire Ties or Electrical Tape.)