

Jeep Wrangler Rear Vision System with Mirror Display, 2007-Current (Kit # 9002-8836)

Items Included in the Kit

Camera
Chassis Harness
Mirror Harness
Mirror with video display
Zip lock bag with 15 Wire Ties & 3 Push Nuts
These Instructions

Required Tools & Supplies

T15 & T20 Torx Bits
7mm & 10mm Sockets
Phillips Screwdriver
Plastic Trim Removal Tool
Soldering Iron, Solder, & Heat Shrink Tubing
(RECOMMENDED) or T-taps as an alternate
splicing method
Electrical Tape

**Please read so you do not VOID the
warranty:**

**If the camera harness is run through the center on the
camera bracket, it will cut the camera harness. This will
void the warranty on the camera.**

Install Camera

Step 1: Loosen lug nuts to remove spare tire.



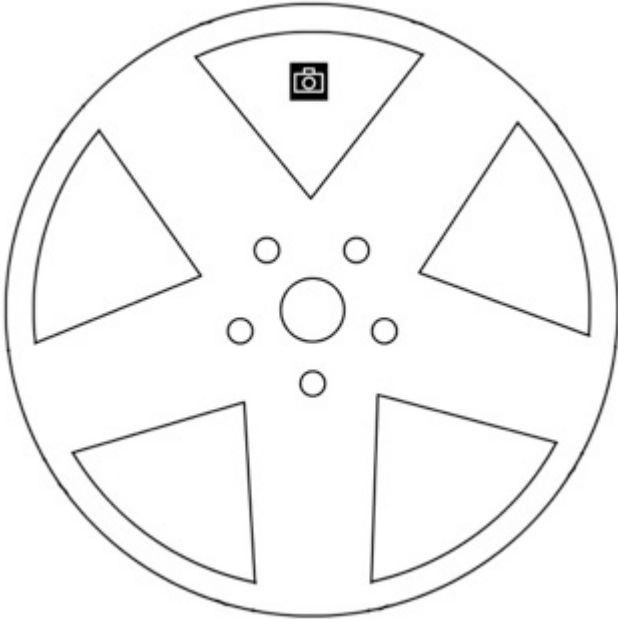
Step 2: Slide Camera on studs placing harness end inside of tire carrier. ***Do not run harness through the camera bracket opening.***

Step 3: Temporarily replace spare tire to check wheel clearance to Camera.



INSTALLATION INSTRUCTIONS

Wheel Alignment for Camera Clearance



Step 4: Remove spare tire and slide (3) supplied Push Nuts on the studs.



Install Chassis Harness

Step 5: Plug Camera connector into gray connector end of Chassis Harness and insert black 6-pin connector end of supplied Chassis Harness through the rear gate vent behind tire carrier.



Step 6: Using a plastic trim removal tool, remove interior panels on inside of rear gate.



Step 7: Pull harness through the rear gate openings.

Step 8: Use supplied Wire Ties to secure Chassis Harness to existing harness.



Step 9: Use supplied Wire Ties to secure Chassis Harness to fabric factory wire cover. CAUTION: Leave enough slack to allow gate to open fully.



INSTALLATION INSTRUCTIONS

Step 10: Use a T20 Torx bit to remove subwoofer box.



Step 11: Using a plastic trim removal tool, pry off rear seat belt closeout.



Step 12: Using a plastic trim removal tool, remove rear access panel to expose 10mm bolt, and remove bolt.



Step 13: Pull out subwoofer box slightly to gain access to run Chassis Harness along existing harness

Step 14: Pull back carpet and continue running Chassis Harness forward.



Step 15: Run Chassis Harness under B-pillar cover to passenger door sill. Use a plastic trim removal tool to remove the (2) plastic push pins and remove passenger sill plate/kick panel.



Install Mirror

Step 16: Unplug factory mirror connector from back of mirror.



Step 17: Use a T15 Torx bit to remove factory mirror and slide the mirror upward off the mounting tab.
CAUTION: Do not twist mirror as windshield damage could result.



INSTALLATION INSTRUCTIONS

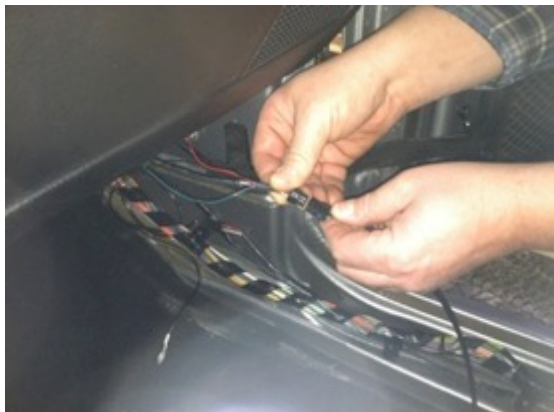
Step 18: Carefully install supplied Mirror by sliding it downward on the mounting tab. **CAUTION:** Torque supplied Mirror screw to 1.8 Nm (16 lb-in) and do not exceed 2.2 Nm (19.5 lb-in).



Install Mirror Harness

Follow Steps 19 through 28 ONLY for 2013 to current vehicles with factory auto dimming mirrors. For 2007 to 2012 vehicles equipped with non-powered mirrors, proceed to Step 29.

Step 19: Connect supplied Mirror Harness to Chassis Harness. Cut off the extra red and green wire at the 6-pin connector and use tape to isolate using electrical tape.



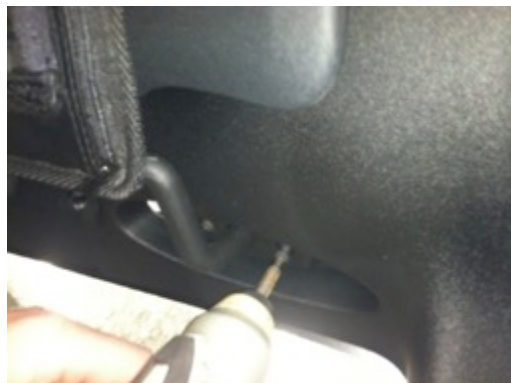
Step 20: Use a 10mm socket to remove the existing nut located behind the passenger kick panel and attach ground eyelet of Chassis Harness to chassis ground.



Step 21: Begin running 16-pin mirror connector end of Mirror Harness to mirror by first removing IP access panel.



Step 22: Remove passenger side sun visor using a T15 Torx bit.



INSTALLATION INSTRUCTIONS

Step 23: Use a Phillips screwdriver to remove Phillips fastener on upper-A pillar and remove pillar.



Step 24: Remove lower A-pillar cover (no tools required).



Step 25: Pull down right side of header panel.

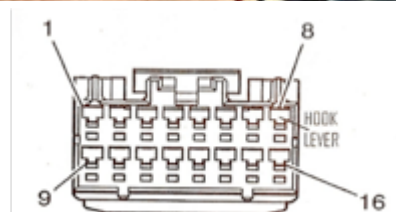
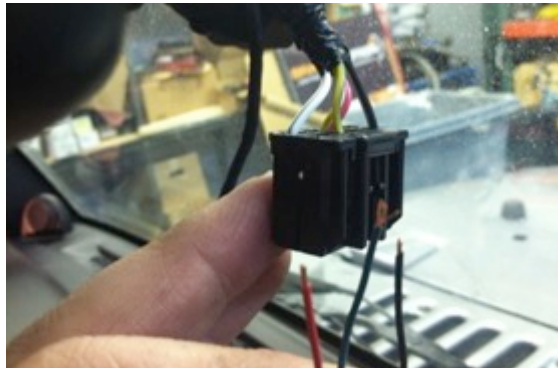


Step 26: Run supplied Mirror Harness to Mirror location.

Step 27: Splice the two red and green wires located near the 10-pin connector on supplied Mirror Harness to the below indicated wires of the factory mirror harness using solder and cover with heat shrink tubing (recommended).

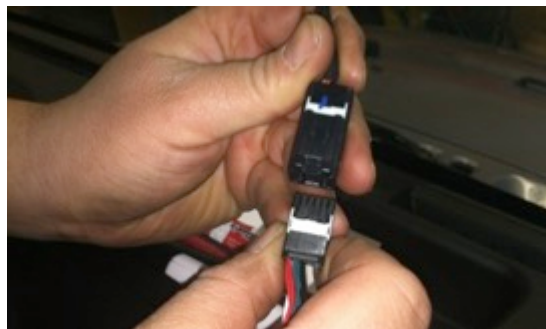
16 Pin Position 9 - Reverse White/Gray to Green Wire

16 Pin Position 13 - 12v Ignition Pink/Yellow to Red Wire



16-pin Connector face

Step 28: Connect supplied Mirror connector to supplied Mirror Harness. Proceed to Step 43.



NOTE: Follow Steps 29 through 42 ONLY for 2007 to 2012 vehicles equipped with non-powered mirrors.

Step 29: In the factory wire harness located in the passenger foot well, locate the White/Gray Reverse signal wire and splice Green Reverse wire from supplied Mirror Harness. RECOMMENDED: Use solder and cover with heat shrink tubing or use T-tabs as an alternate connection method.

INSTALLATION INSTRUCTIONS

Step 30: Perform above Steps 21 through 26 before proceeding to Step 31.

Step 31: Remove rubber bin insert from top of dash.



Step 32: Remove 7mm bolt.



Step 33: Using a plastic trim removal tool, remove window switch panel.



Step 34: Disconnect harness from window switches.



Step 35: Remove 7mm bolt.



Step 36: Remove driver knee bolster cover.



INSTALLATION INSTRUCTIONS

Step 37: Remove (2) 7mm bolts on both sides of the steering column.



Step 38: Remove center stack/cluster surround.

Step 39: Remove glove box for access and run Mirror Harness toward center of dash.



Step 40: Using a plastic trim removal tool, remove HVAC panel.



Step 41: Run Red 12v+ ignition wire of supplied Mirror Harness to ignition controlled power point on HVAC panel power point.

Step 42: Splice Red power wire to Blue/Red wire on back of power point. RECOMMENDED: Use solder and cover with heat shrink tubing or use T-taps as an alternate connection method.



Step 43: Test the system. Start vehicle and shift into Reverse in order to check that all connections were made properly. If all of the connections are correct you will see the camera image displayed on the supplied Mirror display screen.

Step 44: Reassemble vehicle. Follow your disassembly steps in reverse order, taking care not to bind the harness wiring when reinstalling trim.