

**Jeep Wrangler Adjustable Infrared Light Rear Vision Camera
System for Factory Display Radios
2007 – Current (Kit # 9002-8857)**

Items Included in the Kit

Camera
Chassis Harness
Power Harness
22--pin white connector w/ video RCA (for
factory display radio)
Program Module
Zip lock bag with 15 Wire Ties & 3 Push Nuts
Camera Extension Bracket
These Instructions

Required Tools & Supplies

T15 & T20 Torx Bits
7mm & 10mm Sockets
Phillips Screwdriver
3/8" Wrench or Socket Drive
Plastic Trim Removal Tool
Soldering Iron, Solder, & Heat Shrink Tubing
(RECOMMENDED) or T-taps as an alternate
splicing method
Electrical Tape

**Please read so you do not VOID the
warranty:**

**If the camera harness is run through the center on the
camera bracket, it will cut the camera harness. This will
void the warranty on the camera.**

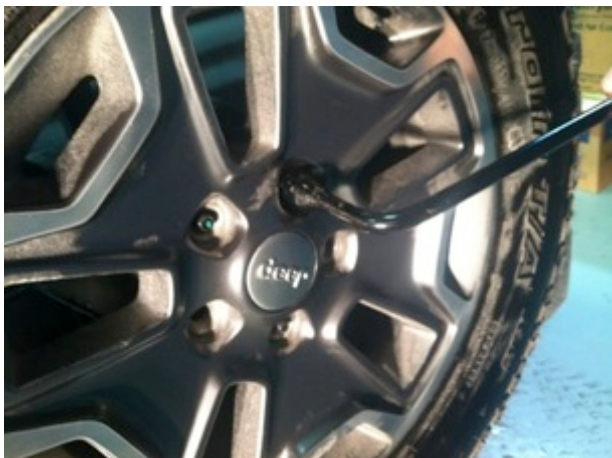


NOTE: We strive to provide accurate and up-to-date installation instructions. For the latest full color instructions, as well as an installation video, please visit www.brandmotion.com

INSTALLATION INSTRUCTIONS

Install Camera

Step 1: Loosen lug nuts to remove spare tire.

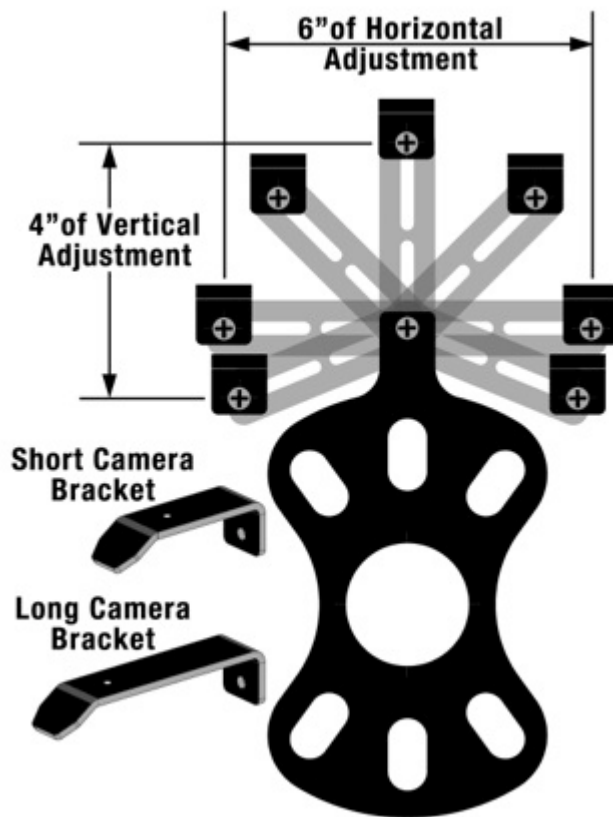


Step 2: Slide Camera on studs placing harness end inside of tire carrier. **Do not run harness through the camera bracket opening.**

Step 3: Adjust Camera head to fit your specific wheel. Bracket is shipped in factory wheel configuration.

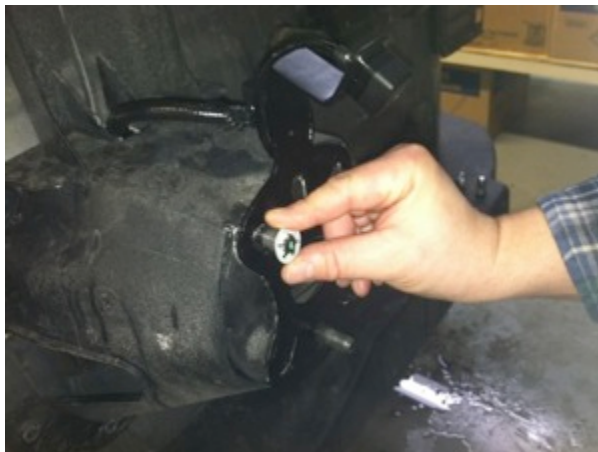


Adjust bracket for camera clearance using Phillips Screwdriver and 3/8" wrench or socket drive



Note: Short Bracket has been designed for Factory offset wheels. Use the Long Bracket for wheels with larger offsets.

Step 4: Remove spare tire and slide (3) supplied Push Nuts on the studs.



Step 5: Reinstall spare tire.

Install Chassis Harness

Step 6: Insert connector from Camera connector through the rear gate vent behind tire carrier.



Step 7: Using a plastic trim removal tool, remove interior panels on inside of rear gate.



Step 8: Pull harness through the rear gate openings.

INSTALLATION INSTRUCTIONS

Step 9: Line up the arrows on the smaller Camera Harness barrel connector with the larger Chassis Harness barrel connector. Insert the Camera Harness barrel connector into the Chassis Harness barrel connector.



Step 10: Use supplied Wire Ties to secure Chassis Harness to existing harness.



Step 11: Use supplied Wire Ties to secure Chassis Harness to fabric factory wire cover. CAUTION: Leave enough slack to allow gate to open fully.



INSTALLATION INSTRUCTIONS

Step 12: Use a T20 Torx bit to remove subwoofer box.



Step 13: Using a plastic trim removal tool, pry off rear seat belt closeout.



Step 14: Using a plastic trim removal tool, remove rear access panel to expose 10mm bolt, and remove bolt.



Step 15: Pull out subwoofer box slightly to gain access to run Chassis Harness along existing harness

Step 16: Pull back carpet and continue running Chassis Harness forward.



Step 17: Run Chassis Harness under B-pillar cover to passenger door sill. Use a plastic trim removal tool to remove the (2) plastic push pins and remove passenger sill plate/kick panel.

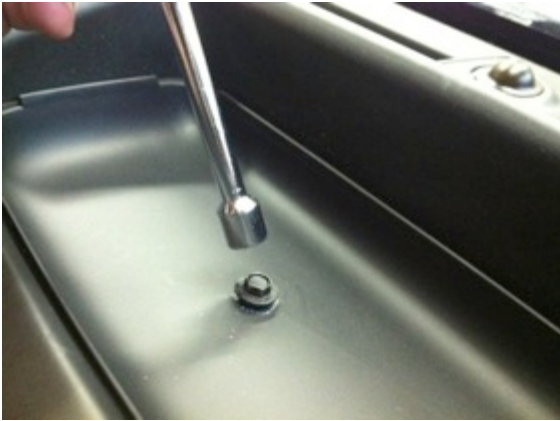


Step 18: Remove rubber bin insert from top of dash.



INSTALLATION INSTRUCTIONS

Step 19: Remove 7mm bolt.



Step 22: Remove 7mm bolt.



Step 20: Using a plastic trim removal tool, remove window switch panel.



Step 23: Remove driver knee bolster cover.



Step 21: Disconnect harness from window switches.



Step 24: Remove (2x) 7mm bolts on both sides of the steering column.



Step 25: Remove center stack/cluster surround.

Step 26: Remove glove box for access and run Mirror Harness toward center of dash.



Step 27: Using a plastic trim removal tool, remove HVAC panel.



Step 28: Connect Power Harness by splicing RED power wire to Blue/Red wire and BLACK Ground to Black/White wire on back of power point (cigarette lighter).
RECOMMENDED: Use solder and cover with heat shrink tubing or use T-taps as an alternate connection method.

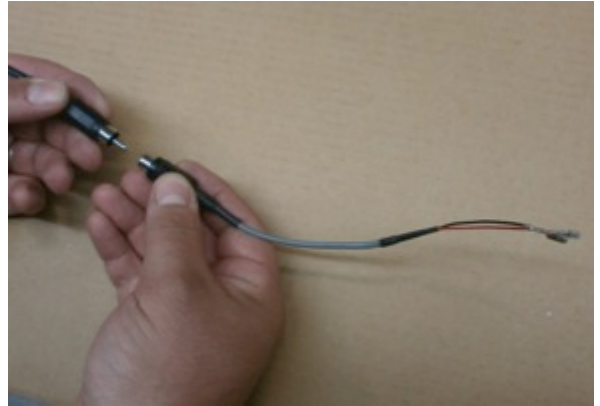


INSTALLATION INSTRUCTIONS

Step 29: Connect Chassis Harness to Power Harness



Step 30: Plug the Power Harness RCA connector into provided jumper harness.



Step 31: Insert the white 22-pin connector into the back of radio.



Programming Instructions

PLEASE NOTE: These modules are VIN locked for single use.

- a) With the module not plugged in, key on the ignition and wait 10 seconds for the chimes and lights to stop flashing.
- b) Plug module into OBDII port, located under the dash on the driver's side, and wait to hear "honk honk". Programming is completed.
- c) Unplug the module from the OBDII port.



Step 32: Test the system. Start vehicle and shift into Reverse to check that all connections were made properly. If all the connections are correct, you will see the camera image displayed on the factory display screen. To enable or disable the camera input, select from among rear vision options in radio settings.

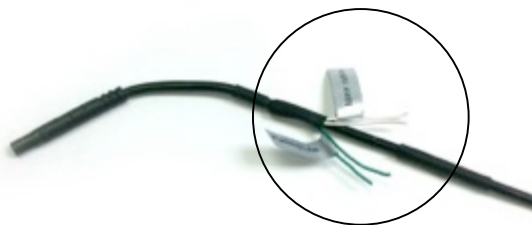
Step 33: Reassemble vehicle. Follow your disassembly steps in reverse order, taking care not to bind the harness wiring when reinstalling trim.

INSTALLATION INSTRUCTIONS

NOTE: This camera can display parking grid lines or no parking grid lines as well as mirrored image or non-mirrored image options.

Parking grid line options: Default setting is to display parking grid lines. Remove parking grid line display by connecting the two green wires near the end of the camera harness.

Display options: (Not to be used in this application!) Default setting is mirror image display for rearward facing camera (rear view) installation. Change to non-mirrored image for forward facing camera (front view) by connecting the two white wires near the end of the camera harness.



Green and white wires on the camera harness.