

**2013-2014 F-150 8" MyTouch factory display  
360° Vision System  
(Kit # AVMS-3608)**

**DUE TO THE COMPLEXITY OF THIS KIT  
PROFESSIONAL INSTALLATION IS REQUIRED  
CALIBRATION KIT IS REQUIRED FOR FINAL PROGRAMMING**

**Please read thoroughly before starting installation and check that kit contents are complete.**

**Items Included in the Kit:**

Video interface for 8" MyTouch display  
2004-2014 Tailgate handle w/camera  
360° camera module  
Key box power/image buttons  
Front camera w/grill mount and harness  
2 side mount cameras w/pods and harnesses  
2 video output RCA cables  
Power/camera input harness  
2 side camera templates  
Mounting screws and gaskets  
These instructions

**Tools & Supplies Needed:**

Wire strippers  
Wire cutters  
Electrical tape  
Zip ties  
Plastic panel removal tools  
Screwdriver  
7 mm socket  
Drill  
Large Uni-bit/drill bits  
Hole saws

**Safety Precautions:**

- Work in well ventilated area that is clear of obstructions.
- Secure vehicle with tire chucks in both front and rear of tires.
- Turn vehicle accessories OFF and ensure ignition key is in OFF position.
- Wear safety goggles and snug fitting clothes.
- Use tools only for their intended purpose and which are in good repair.
- Only perform this task if confidence, skill, and physical ability permit.

**NOTE: We strive to provide accurate and up-to-date installation instructions. For the latest full color instructions, as well as an installation video, please visit [www.brandmotion.com](http://www.brandmotion.com)**

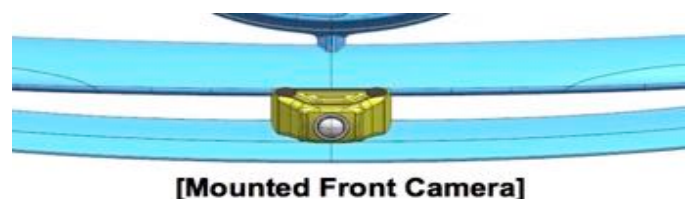
**Section 1:**

**Front camera installation**

1. Front camera is mounted in the grill below the Ford emblem.
2. Mount camera in housing using the bracket and screws provided.



3. Mount the housing using the provided screws to the grill and putting the caps in the holes to close them.





4. Run the camera harness along the under hood covering, down the drive side hinge. Zip tie the harness to the hinge so the harness will not kink or cut.
5. Run harness into the vehicle through the factory grommet in the drivers side firewall.
6. Route the camera harness to the location of the 360° module.

### **Section 2:**

#### **Side Mirror Camera installation**

1. The inter door panel will have to be removed for installation of the side cameras.
2. Working on the driver side door. With the door closed, place the template sticker (marked *LHD*) on the bottom side of the mirror with arrow aiming away from the vehicle. Perpendicular to the side of the body. (Do not go by mirror lines or angles.)



3. Make sure the template is to at least the middle to outer edge of the mirror. (*The camera needs to see only a little of the side of the vehicle and mainly the ground and objects next to the vehicle.*)
4. Remove the door panel and the 3 nuts that are holding the mirror to the vehicle.
5. Place the mirror on a soft or padded surface and remove the glass from the mirror. (*Each vehicle is different, but most are mounted by a center circle and will unclip from it.*)

## INSTALLATION INSTRUCTIONS

cameras to the brackets and the brackets to the pods.



6. After the glass is removed, check to see if where the templates are placed there is clearance for the camera and will not cut into anything in the mirror housing. *(If the template has to be moved make sure to keep the arrow aiming the same way.)*
7. Drill a hole in the bottom of the mirror using a hole saw or Uni-bit to the size on the template. Which is 1 1/8"

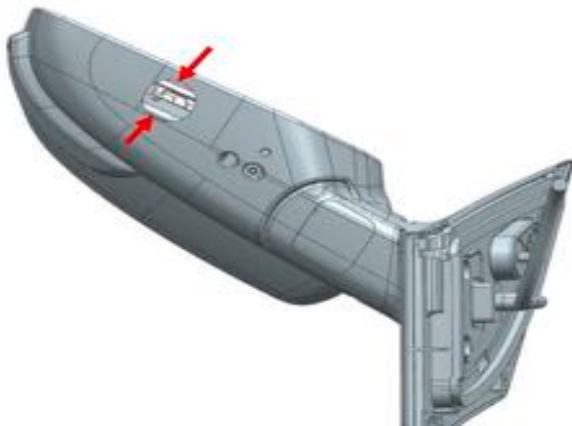


LH – Driver's side camera



RH- Passenger side camera

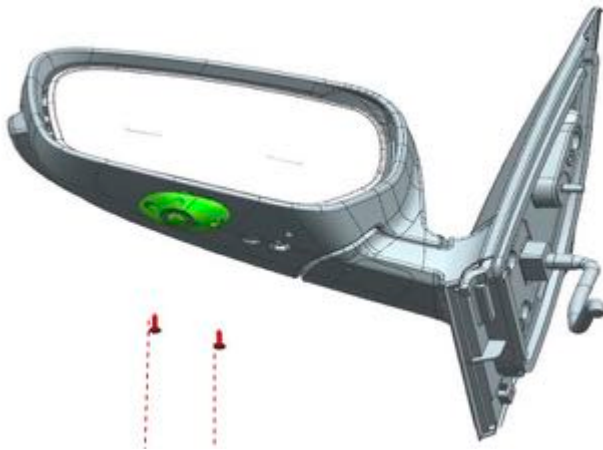
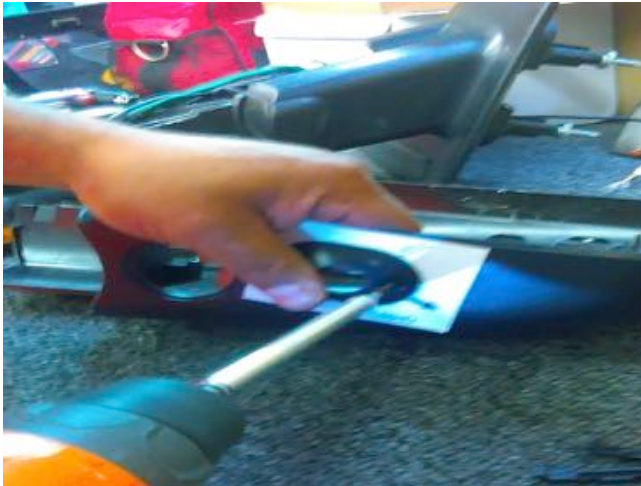
10. Using the LH camera assembly, attach the foam gasket to the bottom side of the pod, lining up the notch in the foam with the bump on the pod.



8. With the sticker still in place, drill the (2) mounting screw holes with a 1/16 drill bit. *(Do not go all the way though.)*
9. The side cameras, brackets and pods are labeled for right-RH and left-LH. Make sure to assemble them correctly. Use caution not to loss the tiny screws to mount the



11. Remove the tape from the foam gasket and mount the camera pod to the mirror. Use the self tapping screws provided to mount the pods to the underside of the mirror. *(Do not over tighten the screws, it may strip out the plastic.)*



12. Route the camera cable through the mirror and out of the mounting side of the mirror. Make sure not to block any movement of the mirror glass or folding.

13. Route the cable in the door and remount the mirror to the vehicle.

14. You will next pin the camera cable wires into the provided connector. Inset the pins into the connector until they make a "snap" sound. Use the left side camera harness to match up where the pin locations are. (See Diagram chart **1a**. at end of instructions for all camera pin connections.)

## INSTALLATION INSTRUCTIONS

15. Attach the camera cable to the harness and route through the door to the rubber boot. Secure the harness to the factory wire harness with zip ties.

16. Route the harness out through the rubber boot into the vehicle. (*The vehicle might have a Molex or plastic plug in the door of body, if so drill a hole in the plug if there is any room to, if not drill a hole lower in the door just under the rubber boot and the same if the plug is in the body. Grommet and seal any holes that might be drilled.*)

17. Route the harness to the 360° module.

18. Reinstall the mirror glass into the mirror and reinstall the door panel.

19. Repeat the process on the passenger side door and then continue to the next section.

### Section 3:

#### Rear camera installation

1. The rear camera on this vehicle will be in the tailgate handle. The camera is already mounted to the handle.

2. Remove the trim panel on the backside of the tailgate, by removing the Torx screws holding it in place.



3. Unclip the latch rods the go to the handle. *(If equipped with a rear camera, unplug it from the harness.)*
4. Loosen the (2) 10 mm nuts holding the handle in place.
5. Remove the handle and install the new handle with the 360° camera installed.
6. Connect the camera cable to the rear camera harness and heat shrink or tape the connection.
7. Route the harness through the tailgate and into the lower bed frame. *(If holes do not exist in the tailgate or bed frame you must drill new holes in to each to run harness. Make sure to use grommets and seal up holes to prevent rust or cutting of harness.)*



8. Route the harness on the underside of the vehicle. Use zip ties to hold harness in place and be careful to avoid any moving parts or exhaust.



9. Route the harness in to the vehicle by coming up through a grommet in the floor or the grommet under the hood in the firewall.
10. Route the rear camera harness to the 360° module.

#### **Section 4:**

#### **360° module installation**

1. Connect the correct camera plugs to the 360° module. Front, rear, left side, right side, CVBS and CVBS RV.
2. The CVRS output, is video output controlled by the power on/off button to the system. It is connected to the video input on the mirror or AUX video on the interface.
3. The CVRS RV output, is video output when the accessory is powered on. It is connected to the camera input on the mirror or camera input on the interface.
4. If not done so yet connect the power harness to the 360° module. Wire up the power connections, yellow is constant, red is accessory, black is ground, blue is reverse.
5. Do not mount the 360° module, you will need to get to it for calibration of the cameras.
6. Plug in the Key Box and mount to the right side of the steering column on the dash trim with the tape provided.



7. To turn on the system press the power button on the Key Box. To turn the system off press the power button 3 times within 1 second. To change camera views press the car image button. A long press will show a full front view another long press will show a full rear view.
8. Place the vehicle into reverse to see the rear camera image on the screen.

### Section 5:

#### Installation of the 8" MyTouch interface

1. Remove the trim around the screen/display in the dash.



## INSTALLATION INSTRUCTIONS

2. Remove the (4) 7mm bolts holding in the screen/display. Pull screen forward out of dash.



3. Remove the large plug to the left of the screen by lifting the handle like plug.



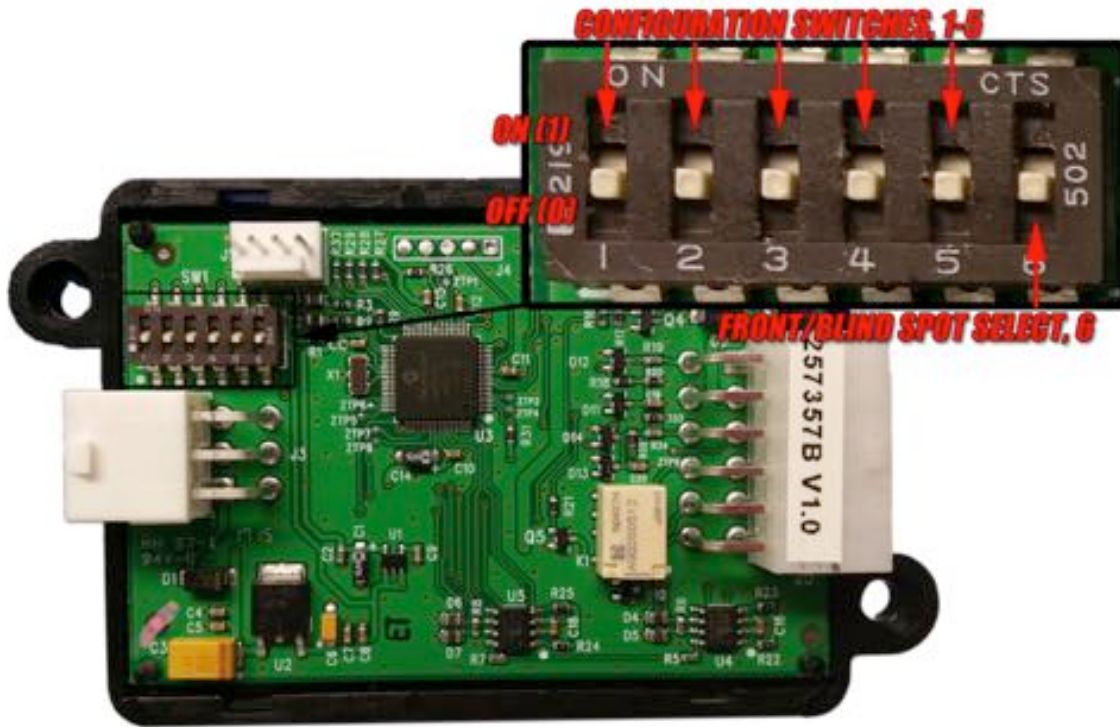
4. Plug the harness into the 9002-2781 module and the male side of the T harness into the back of the screen where the factory harness was just removed. Make sure the handle is locked back in the down position.



5. Plug the female end of the T harness into the factory harness. Make sure the handle is locked back in the down position.



6. Remove (if plugged in) the 4-pin to 6-pin adaptor. It is not need for installation.
7. Connect the 6-pin harness to the 9002-2781 module. On the other side of the module connect the 12-pin harness.
8. Use Red for accessory. Black for ground. Purple for reverse.



The dip-switches should be set as follows:

**10010** | MyFord/MyFord Touch

1-UP/ON

2-DOWN/OFF

3-DOWN/OFF

4-UP/ON

5-DOWN/OFF

6-DOWN/OFF