

SummitView Rock Camera Store Display
DISP-2002

Items Included in the Kit:

- DISP-2002
- 7" Monitor w/ mounting foot for center bolt
- Power Supply
- (2) 1/4x20, 1 1/2" Screw
- (1) Plastic Spacer
- Plastic Pamphlet Holder

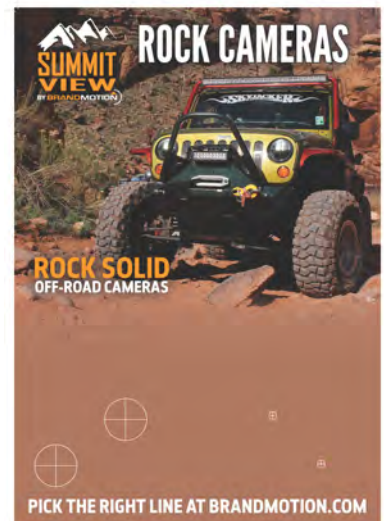
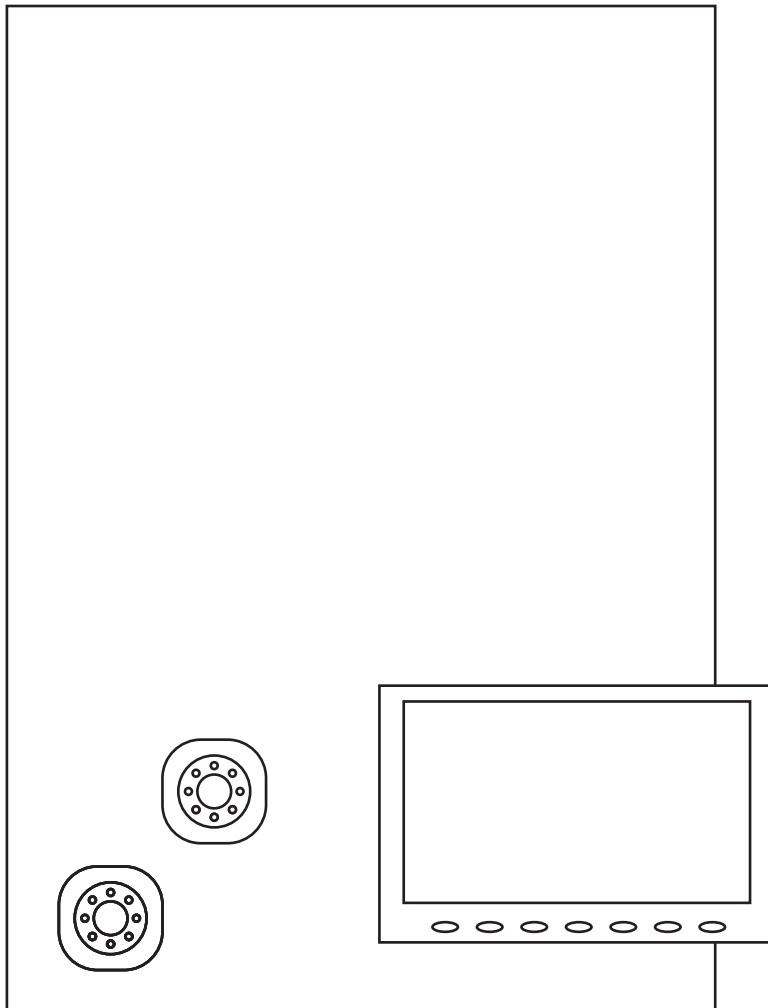
Tools & Supplies Needed:

- Phillips screw driver
- Wire strippers
- Straight Pick Tool
- Electrical Tape
- Soldering Iron (optional)
- 2.5mm Allen wrench

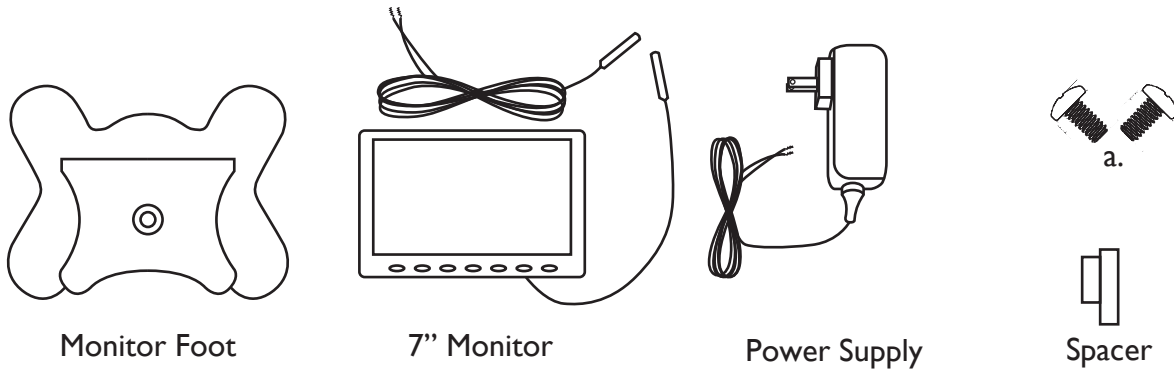
Camera Kits Required:

9002-8852: Rock Camera

(The product system can be easily removed and mounted to a vehicle at any point in time)



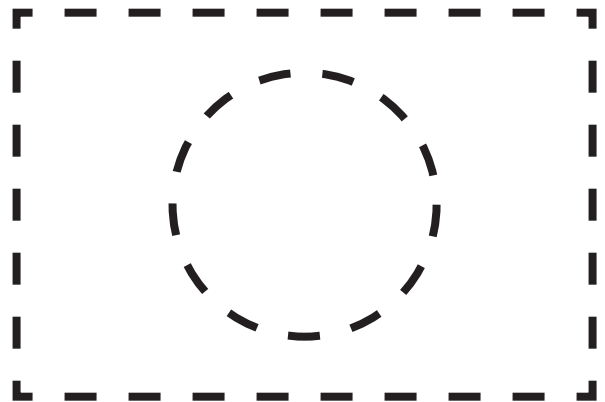
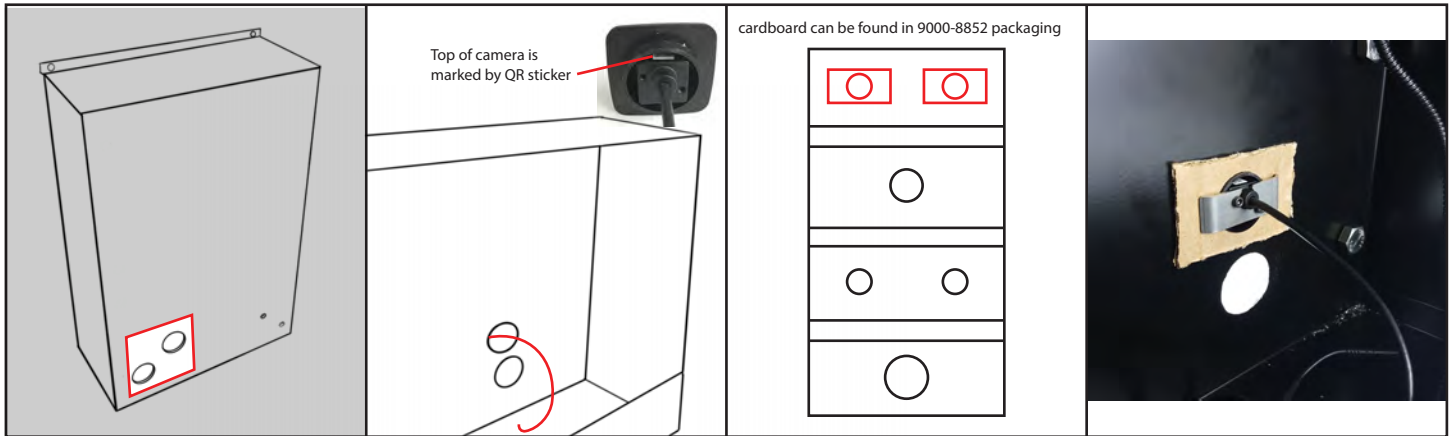
Step 1. Check that all parts are included in this kit.



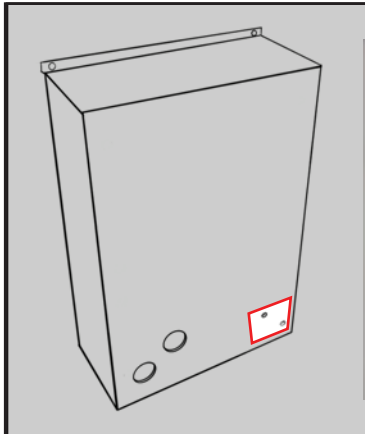



Step 2. Locate all camera kits that will be attached to display stand. (sold separately)



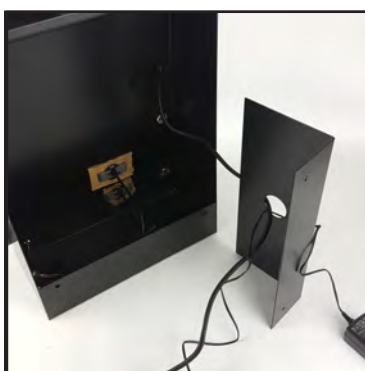

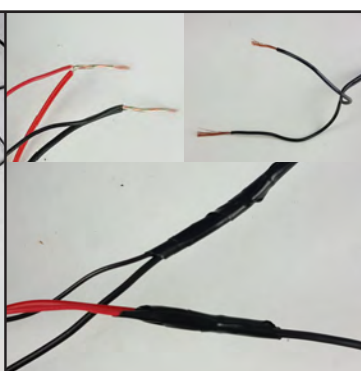
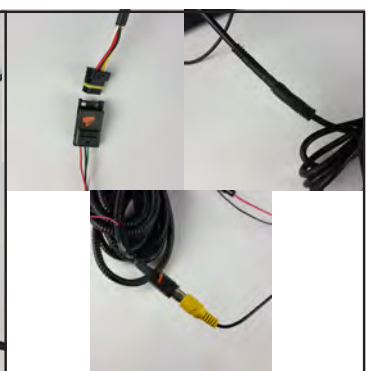
Step 3. Installation of 9002-8852



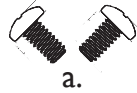
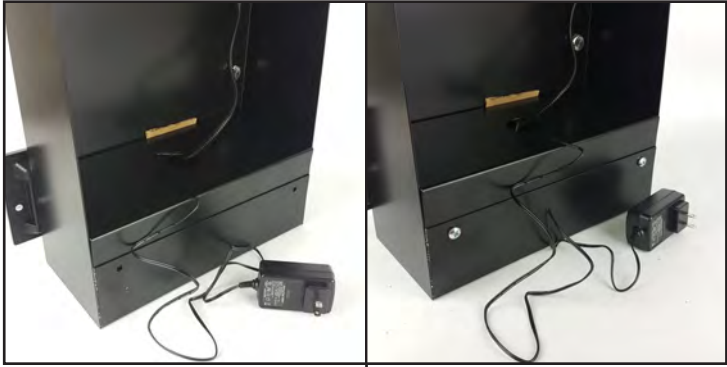
Step 4. Installation of 7" monitor

			
<p>4.1- Locate the mounting and video harness hole.</p>	<p>4.2- Remove the monitor, video input/power harness, and stand from monitor box.</p>	<p>4.3- Remove metal square, retaining collar, and bolt from stand. Use pick to dislodge retaining collar from bolt.</p>	<p>4.4- Slide plastic washer over bolt, insert through back of display at location marked, then loosely attach metal square. Feed video cable through lower hole. Slide monitor over metal square and gently tighten.</p>

Step 5. Electrical wiring

			
<p>5.1- Feed video harness from backup camera and power supply cord through top of metal plate as shown.</p>	<p>5.2- Locate power/video harness for camera and monitor. Strip ends of loose red and black wires for both. <u>Do not strip brown wire.</u></p>	<p>5.3- Secure positive and negative connections between harnesses. Remove end of power supply, strip wires, then secure positive and negative connections. <small>(on power supply, gray dashed line is negative)</small></p>	<p>5.4- Secure waterproof connection of desired camera, video input, and 6-pin connector.</p>

Step 6. Installation of harness cover.



6.1- Ensure that power supply exits the top of the bracket. Slide into place, being careful not to pinch any wires.

6.2- Screw bracket to display body.

