

## Qi Wireless Charging Installer Kit (Kit # FDMC-1210)

Please read thoroughly before starting installation and check that kit contents are complete.

### Items Included in the Kit:

Qi Wireless Charging Module with  
Full Size Trim to Fit Substrate  
Power Harness with 3 amp Fuse  
Full Size Trim to Fit Non Slip Mat  
4 – Flat Head Torx 1/4" Screws  
4 – Flat Head Torx 1/2" Screws  
4 – Flat Head Torx 1" Screws  
4 – Pan Head Torx 3/8" Screws  
These Instructions with Trim Template  
Removable Consumer Product Label

### Tools & Supplies Needed:

Plastic Trim Removal Tool  
T-15 and T-10 Torx Driver  
Phillips Screwdriver (if needed)  
7mm, 10mm Socket Drive (if needed)  
Center Punch/Scribe Tool  
Power Drill  
1/8", 3/8" and 1/2" Drill Bits  
Scissors  
X-Acto Knife  
Wire Ties  
Soldering Iron & Solder (Recommended)  
Tape or Heat Shrink Electrical Tubing  
Multi Meter or 12V test light

**\*Note this product is designed to work with Qi compatible devices. Please confirm that your device is Qi compatible before installation. Visit [www.brandmotion.com](http://www.brandmotion.com) for phone compatibility guide.**

### **Safety Precautions:**

- Work in well ventilated area that is clear of obstructions.
- Secure vehicle with tire chucks in both front and rear of tires.
- Turn vehicle accessories OFF and ensure ignition key is in OFF position.
- Wear safety goggles and snug fitting clothes.
- Use tools only for their intended purpose and which are in good repair.
- Only perform this task if confidence, skill, and physical ability permit.

**This kit is designed to be customized to fit your specific vehicle application. The following instructions will be your guide to show you the basic steps of the installation. Your vehicles installation may vary from these steps shown in these instructions.**

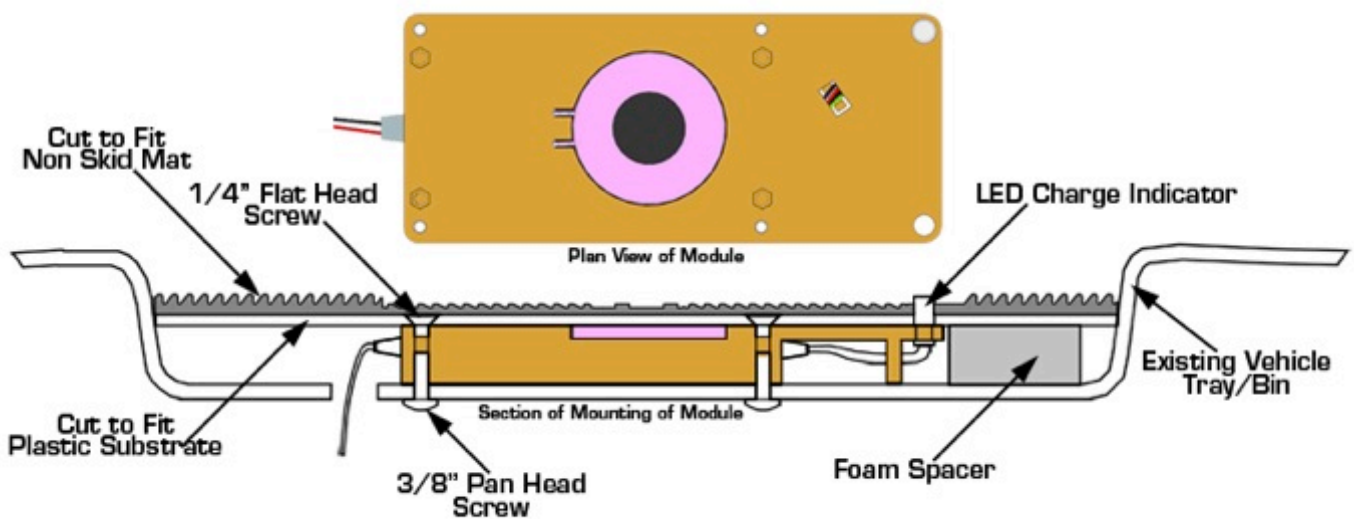
**IMPORTANT: Do not place smart keys within 6 inches of charging mat. Vehicle may not detect key to start vehicle. Do not place metal objects in tray while charging.**

<b>Section 1: The Three Types of Mounting</b>	<b>Page 2-3</b>
<b>Section 2: Template, Substrate, and Mat Trimming</b>	<b>Pages 4-6</b>
<b>Section 3: Example of Drop In Mounting from below</b>	<b>Pages 7-8</b>
<b>Section 4: Example of Drop In Mounting from above</b>	<b>Pages 9-10</b>
<b>Section 5: Example of Under Mounting</b>	<b>Page 11</b>
<b>Section 6: Power Harness wiring</b>	<b>Page 12</b>
<b>Section 7: Test System and Consumer Label</b>	<b>Page 12</b>

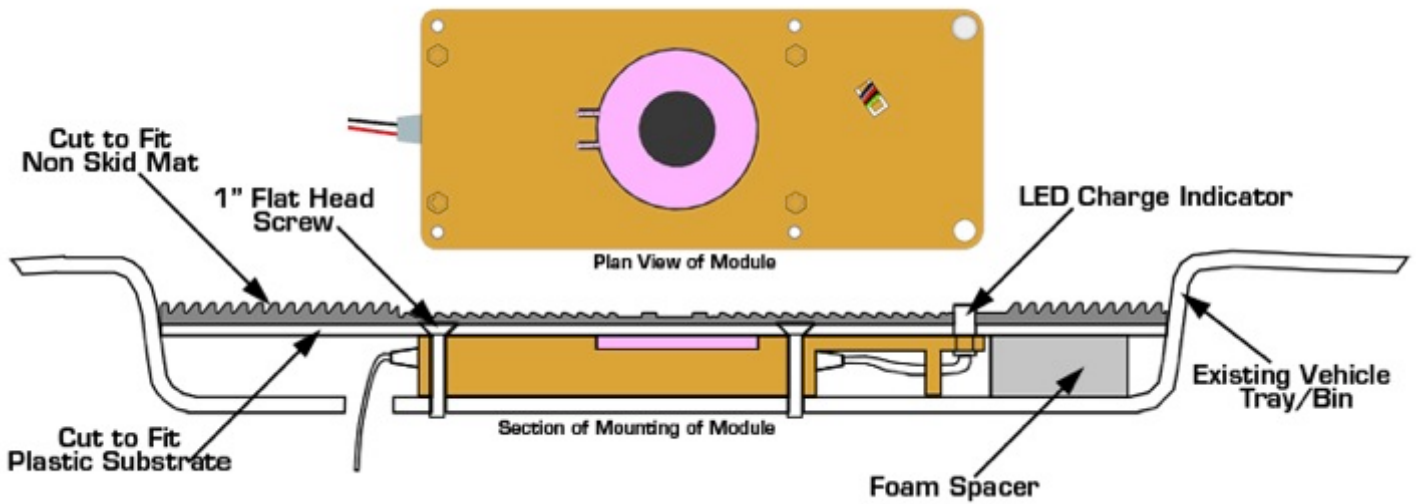
## Section 1: The Three Types of Mounting

Freedom Charge™ has been designed with three unique mounting possibilities to fit almost any application. Please review sections below to determine the best solution for your particular application. Note: Due to high heat and sun exposure the top of dash is not a recommended location for mounting Freedom Charge.

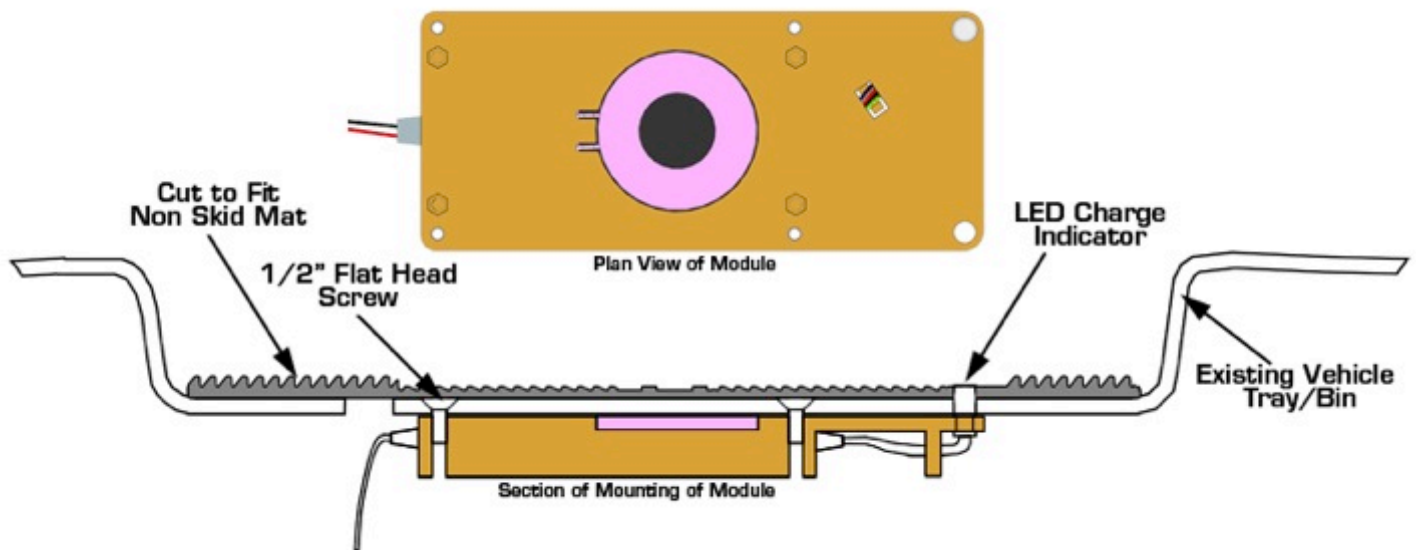
### Drop-In Mounting (from below)



## Drop-In Mounting (from above)



## Under Mount



## INSTALLATION INSTRUCTIONS

### Section 2: Substrate and Mat Development

These next steps illustrate the process of creating your vehicle specific Freedom Charge integrated solution.

**Step 1: Using the Freedom Charge Module determine the best location for installation.**

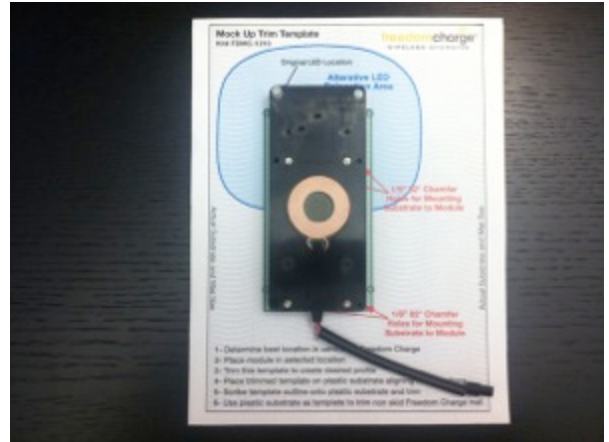


**Step 2: If chosen location has mat, remove to add in making template otherwise carefully cut template to fit. Always start larger and slowly trim down to ensure best fit. Make sure to account for draft as the Freedom Charge Module is about 1/2" thick. If using the Drop-In method of attachment a mat at a bottom of a drafted bin may be slightly smaller than your final substrate and mat solution.**



**Step 3: Template is full size representation of module with recommended minimum area.**

**LED can be relocated to fit tight locations and for under mounting module.**



**Step 4: Align mat on template in desired location. Trace outline centering the module.**



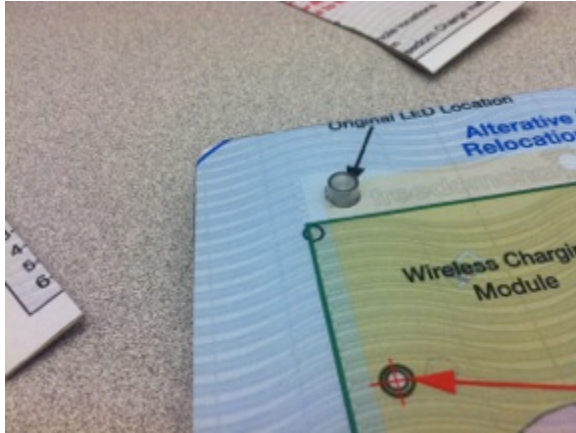
**Step 5: With scissors trim template on traced lines.**





## INSTALLATION INSTRUCTIONS

**Step 6: With X-Acto knife cut out LED hole location. Lay template on Freedom Charge module with LED sticking up through hole.**



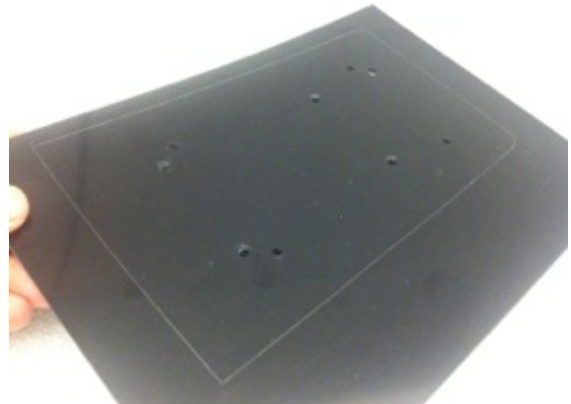
**Step 8: Place template on plastic substrate aligning LED and mounting holes.**



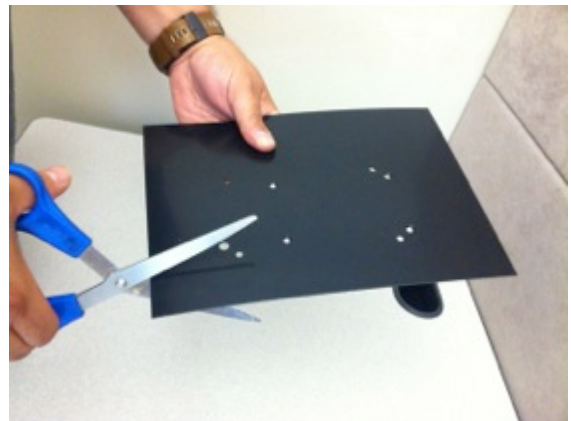
**Step 7: With trimmed template placed on top of Freedom Charge module check for correct fit in vehicle. Make any trim adjustment(s) needed to template to achieve perfect fit.**



**Step 9: Scribe outline.**

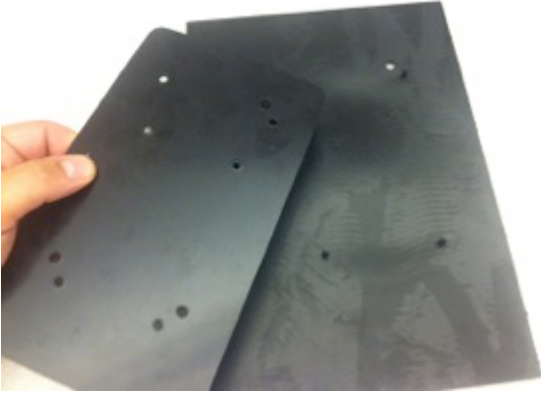


**Step 10: Substrate can be trimmed with scissors. Be careful to cut right on the scribed line. Again check fit in vehicle.**



## INSTALLATION INSTRUCTIONS

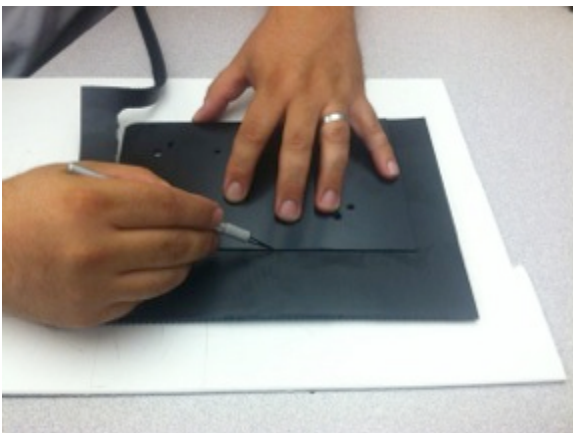
**Step 11: Flip Freedom Charge mat and newly trimmed substrate upside down.**



**Step 12: Align LED holes and insert mats crosshair locators through substrate hole to insure proper alignment.**



**Step 13: Using an X-Acto knife carefully trim mat using substrate as guide.**



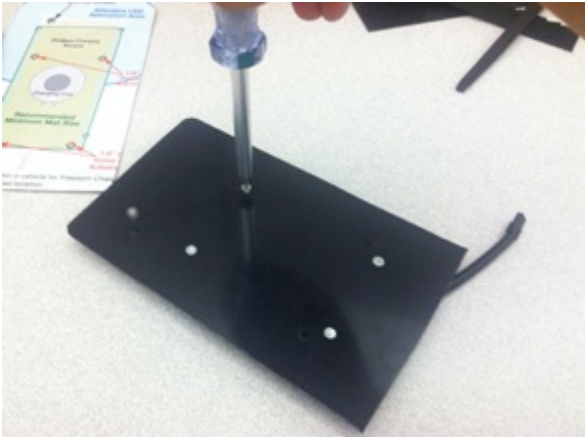
**Step 14: Substrate and Mat now trimmed and ready for assembly and mounting.**



### Section 3: Drop-In Mounting (from below)

Follow the next step if you can reach the underside of your mounting location

**Step 15: Assembly of Substrate to Freedom Charge module for Drop-In Mounting from above. Insert (2) 1/4" Torx Flat head screws through substrate into Freedom Charge Module. This will leave two open chamfered holes.**



**Step 16: Place new assembly into vehicle tray or bin to mark 1/2" hole location required for power connector to pass through. Drill 1/2" hole in marked location.**



## INSTALLATION INSTRUCTIONS

**Step 17: Route Plug of Charging Module through 1/2" hole and place module in bin. Mark the hole locations by inserting center punch or scribe tool through the 2 chamfered holes and firmly marking.**



**Step 18: Remove Charging Module and Drill 3/18" holes at the previous 2 marked locations.**



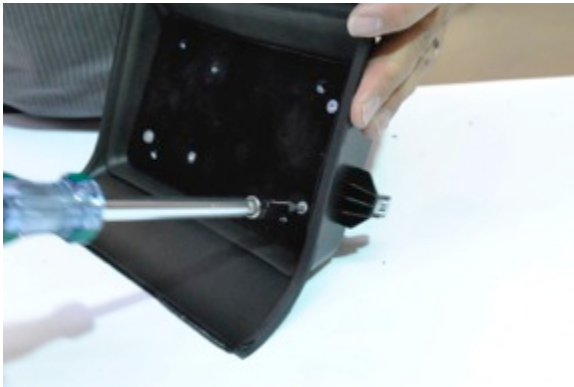


## INSTALLATION INSTRUCTIONS

**Step 19: Route Plug of Charging Module through 1/2" hole and place module in bin. Flip tray over and insert the (2) 3/8" Pan Head T-20 Torx Screws through tray into module.**



**Step 20: From the topside insert the remaining (2) 1/4" flat head screws through the substrate and into the modules. Unscrew the other (2) previously inserted 1/4" flat head screws and repeat steps 17 through 19. Then replace the remove 1/4" flat heads screws.**



**Step 21: Install Non-Slip Freedom Charge Mat to Wireless Charging Module. Place the 4 locator pins in corresponding holes.**



**Step 22: Firmly press Mat around LED.**



**Step 23: Proceed to Power Harness wiring (Section 5).**



## Section 4: Drop-In Mounting (from above)

Follow the next step if you cannot reach the underside of your mounting location. Please be sure there is 1/2" under mounting location and clear of any vehicle wiring or components prior to drilling.

**Step 24: Assembly of Substrate to Freedom Charge module for Drop-In Mounting from above. Insert (2) 1/4" Torx Flat head screws through substrate into Freedom Charge Module. This will leave two open chamfered holes.**



**Step 25: Place new assembly into vehicle tray or bin to mark 1/2" hole location require for power connector to pass through. Drill 1/2" hole in marked location.**



## INSTALLATION INSTRUCTIONS

**Step 26: Route Plug of Charging Module through 1/2" hole and place module in bin. Mark the hole locations by inserting center punch or scribe tool through the 2 chamfered holes and firmly marking.**



**Step 27: Remove Charging Module and Drill 1/8" holes at the previous 2 marked locations.**



## INSTALLATION INSTRUCTIONS

**Step 28: Insert the (2) 1" Flat Head T-10 Torx Screws through Charging Module and into tray/bin. Repeat steps 26 through 28.**



**Step 29: Install Non-Slip Freedom Charge Mat to Wireless Charging Module. Place the 4 locator pins in corresponding holes.**



**Step 30: Firmly press Mat around LED.**



**Step 31: Proceed to Power Harness wiring (Section 5)**

## Section 5: Under Mounting

## INSTALLATION INSTRUCTIONS

Follow the next step if are mounting in a shallow location or have adequate room and accessibility under your surface you are mounting to. Minimum clearance is 5/8" under mounting location and clear of any vehicle wiring or components prior to installation.

**Step 32:** Using template created in Section 2 to mark the (4) mounting hole, (4) mat locators and LED locations.



**Step 33:** Drill (4) 1/8" holes in marked mounting hole locations and (1) 1/4" hole for LED. Also drill the (4) 3/16 holes for the non-skid mat location crosshairs.

**Step 34:** From top of tray/bin chamfer the (4) 1/8" holes to allow flat head torx screws to sit flush.

**Step 35:** From the bottom hold Freedom Charge Module up firmly into location allowing the LED to poke through and screw

the (4) 1/2" flat head screws into the module pulling it snug to tray/bin surface.



**Step 36:** Place non-skid mat on topside of tray/bin with the crosshair locators aligned.



**Step 37:** Firmly press Mat around LED.



**Section 6: Power Harness Wiring (from above)**



**Freedom Charge is powered by ignition control 12v power source. Use a Multi-Meter of test light or manual to determine your vehicle power location.**

**Step 38: Splice Red wire of Power Harness to the Red (12v ignition) wire of the vehicle.**  
RECOMMENDED: Solder wires and cover with Heat Shrink Tubing.

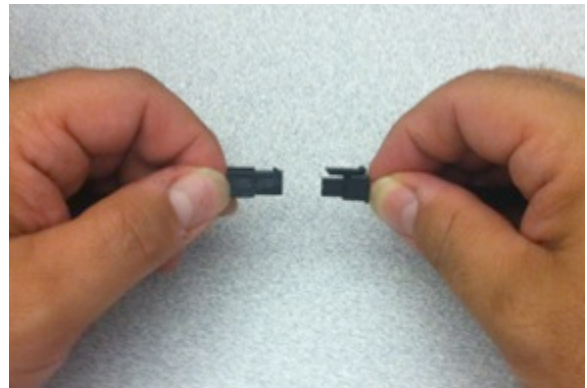


**Step 39: Connect Power Harness grounding eyelet to vehicle ground.**



**Step 40: Connect Power Harness to Charging Module.**

## INSTALLATION INSTRUCTIONS



### Section 7: Test System and Consumer Label

**Step 41: Test system. LED light will illuminate Blue once accessories are on. Once Qi equipped device is placed on Freedom Charge LED will illuminate Green and charging begins.** \*Please note on some devices syncing may take up to 15 seconds. Coil locations vary on various devices; move device on mat until LED illuminates green.

**Step 42: Reassemble vehicle taking care not to bind the harness wiring when reinstalling trim.**

**Step 43: Place removable consumer product label on center of mat.**

