

## 2013 – Current Traverse, Acadia, Enclave Models Qi Wireless Charging Kit (Kit # FDMC-1274)

Please read thoroughly before starting installation and check that kit contents are complete.

### Items Included in the Kit:

Qi Wireless Charging Module with  
Vehicle Specific Substrate and Mat  
Power Harness with 3 amp Fuse  
These Instructions with Template  
Removable Consumer Product Label

### Tools & Supplies Needed:

Plastic Trim Removal Tool  
Phillips Screw Driver  
Center Punch/Scribe Tool  
Power Drill  
1/2" Drill Bits  
Soldering Iron & Solder (Recommended)  
Tape or Heat Shrink Electrical Tubing

**\*Note this product is designed to work with Qi compatible devices. Please confirm that your device is Qi compatible before installation. Visit [www.brandmotion.com](http://www.brandmotion.com) for phone compatibility guide.**

### **Safety Precautions:**

- Work in well ventilated area that is clear of obstructions.
- Secure vehicle with tire chucks in both front and rear of tires.
- Turn vehicle accessories OFF and ensure ignition key is in OFF position.
- Wear safety goggles and snug fitting clothes.
- Use tools only for their intended purpose and which are in good repair.
- Only perform this task if confidence, skill, and physical ability permit.

**NOTE: We strive to provide accurate and up-to-date installation instructions.  
For additional assistance please call Brandmotion Technical Assistance at (734) 619-1250 then dial 2.**

**IMPORTANT: Do not place smart keys within 15cm of charging mat. Vehicle may not detect key to start vehicle. Do not place metal objects in tray while charging.**

## INSTALLATION INSTRUCTIONS

**Step 1: Remove felt liner in armrest tray.**



**Step 2: Using a Phillips Screw Driver remove (6) screws in armrest tray.**



**Step 3: Using a Phillips Screw Driver remove (5) screws at armrest hinge.**



**Step 4: Using a Phillips Screw Driver remove (2) screws under armrest hinge.**



**Step 5: Remove armrest tray.**



## INSTALLATION INSTRUCTIONS

**Step 6: Cut out provided template, mark the locations for 1/2" hole and Drill Hole.**



**Step 7: Using a Trim Removal Tool loosen upper console trim panel.**



**Step 8: Using a Trim Removal Tool remove rear console trim panel.**



**Step 9: Disconnect USB power connector.**



**Step 10: Splice Red wire of Power Harness to the Pink (12v switched ignition) wire of the keyed USB connector and Splice Black wire of Power Harness to the Black w/ White Stripe (ground) wire of the USB connector.**

RECOMMENDED: Solder wires and cover with Heat Shrink Tubing.



## INSTALLATION INSTRUCTIONS

### Step 11: Route Power Harness up through passenger side console opening.

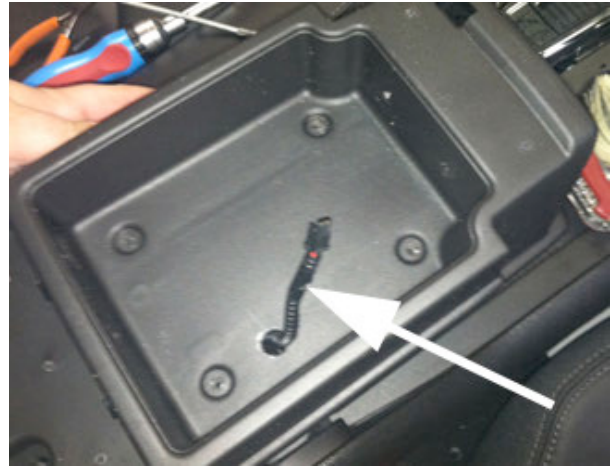
Please Note: Armrest Tray slides, make sure to leave enough play in harness for full travel.



### Step 12: Pull Power Harness through opening in sliding armrest tray lower and secure with zip tie.



### Step 13: Reattach upper armrest tray using Phillips Screw Driver. Make sure Power Harness is through the 1/2" hole.



### Step 14: Connect Power Harness to FreedomCharge Module.



## INSTALLATION INSTRUCTIONS

**Step 15: Remove Adhesive Pad backing material and press firmly in try being careful not to bind harness.**



**Step 21: Test system. LED light will illuminate Blue once accessories are on. Once Qi equipped device is placed on Freedom Charge LED will illuminate Green and charging begins.** \*Please note on some devices syncing may take up to 15 seconds. Coil locations vary on various devices; move device on mat until LED illuminates green.

**Step 22: Reassemble vehicle.** Follow your disassembly steps in reverse order, taking care not to bind the harness wiring when reinstalling trim.

**Step 23: Place removable consumer product label on center of mat.**

