

**2013 - 2014 Chevrolet Camaro, Equinox, Malibu, Volt, and GMC Terrain
Factory Display Radio Camera
(Kit # FLTW-7638)**

***** IMPORTANT *** THIS KIT REQUIRES DEALER ACTIVATION ***
*** CAMERA ACTIVATION RECOMMENDED BEFORE CAMERA INSTALL ***
*** PROFESSIONAL INSTALLATION RECOMMENDED *****

Please read thoroughly before starting installation and check that kit contents are complete.

Items Included in the Kit:

Camera
Hole Saw for camera mount
Chassis Harness
Power Harness
Display Harness with 20-pin connector ends
These Instructions with Template

Tools & Supplies Needed:

Dealer Programmer Tool
Phillips Screwdriver
7mm Socket Drive
Center Punch
1/4" Drill Bit (if needed)
Power Drill
Wire Ties
Electrical Tape or Heat Shrink Tubing
Plastic Trim Removal Tool
Soldering Iron & Solder (Recommended)
T-taps (optional)
Small grommet or Silicone (If needed)
Vehicle service manual (If needed)

Safety Precautions:

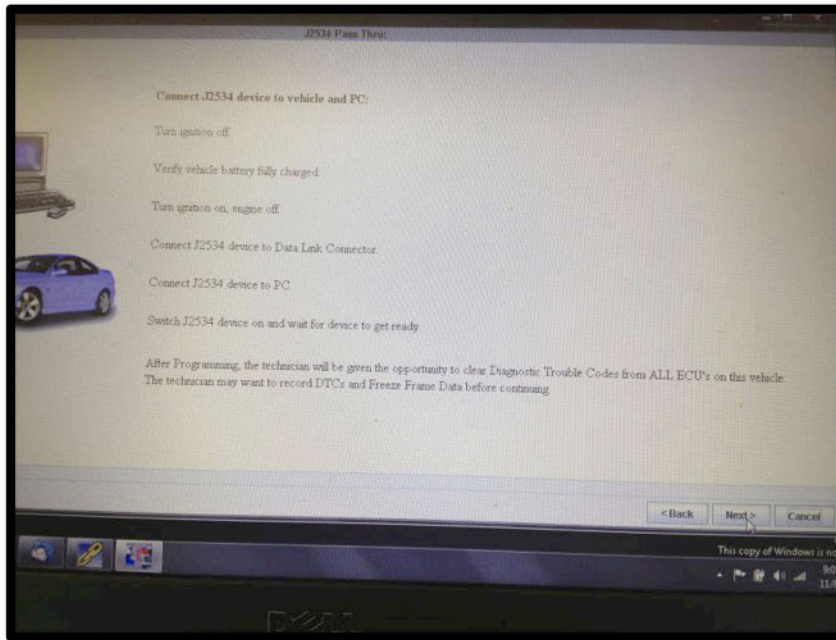
- Work in well ventilated area that is clear of obstructions.
- Secure vehicle with tire chucks in both front and rear of tires.
- Turn vehicle accessories OFF and ensure ignition key is in OFF position.
- Wear safety goggles and snug fitting clothes.
- Use tools only for their intended purpose and which are in good repair.
- Only perform this task if confidence, skill, and physical ability permit.

NOTE: We strive to provide accurate and up-to-date installation instructions.

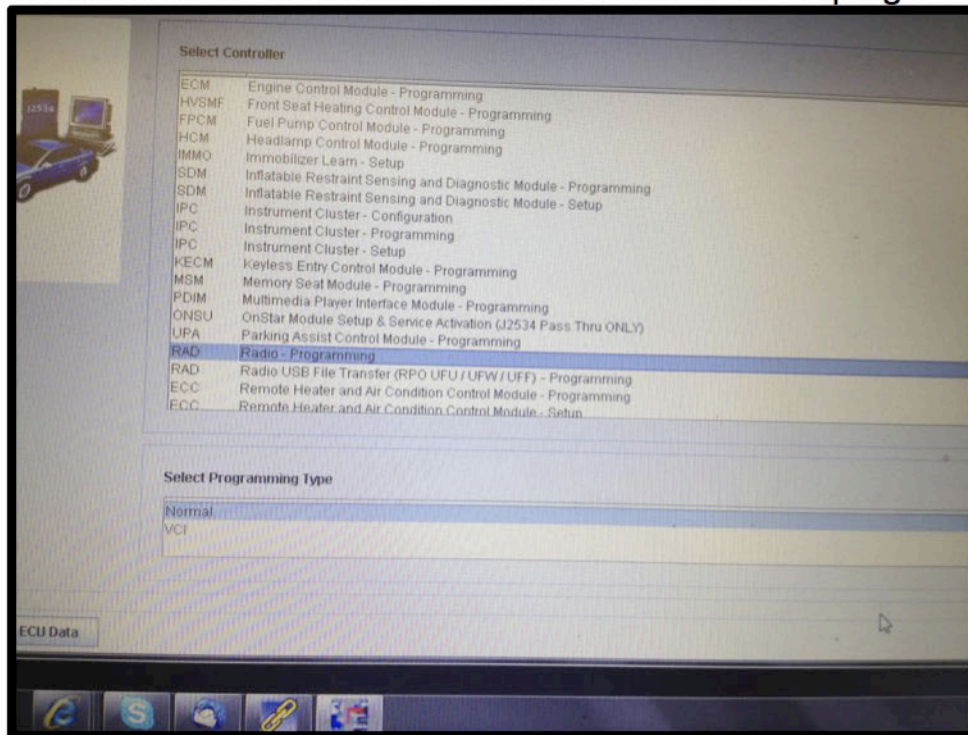
Step 1: Dealer Programming of Radio. The following 5 pages list the steps required by the dealer to activate the camera function on your vehicle. ***Please note activation requires a source VIN of a vehicle with factory camera option that matches the following criteria of the vehicle being programmed.**

- a) Heated or Non Heated Seats
- b) Bose or Non Bose Radio
- c) Navigation or Non Navigation

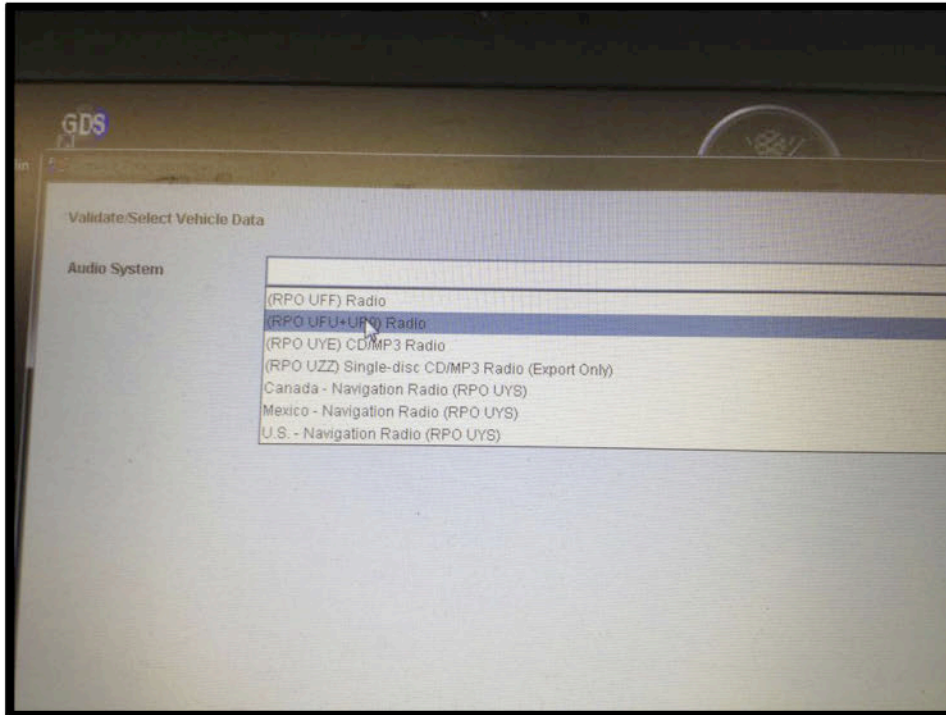
- You will be asked to connect the MDI to the vehicle, once it communicates verify the Vin# is correct.



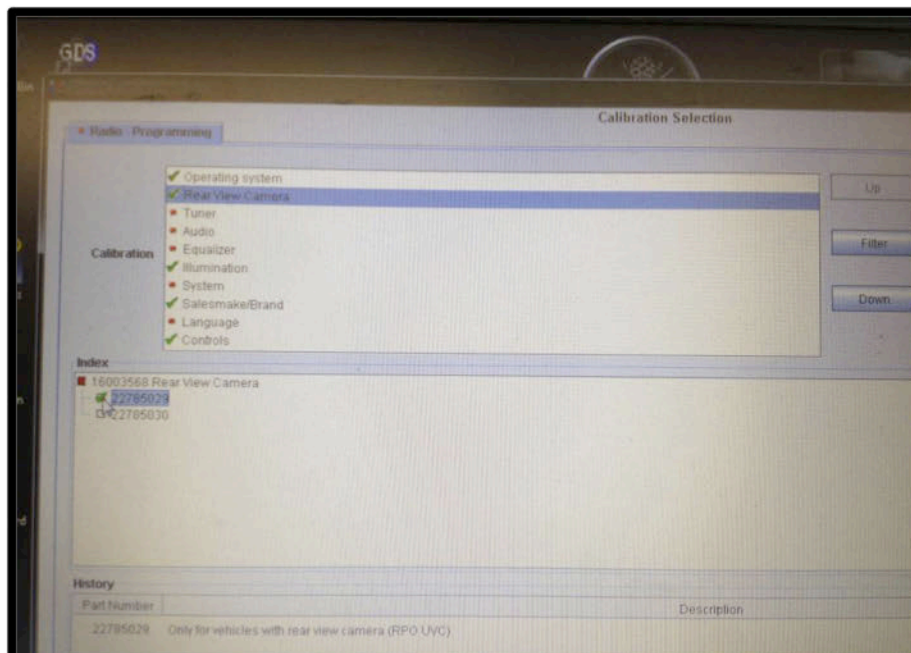
- Select radio from the controller list and select normal programming type

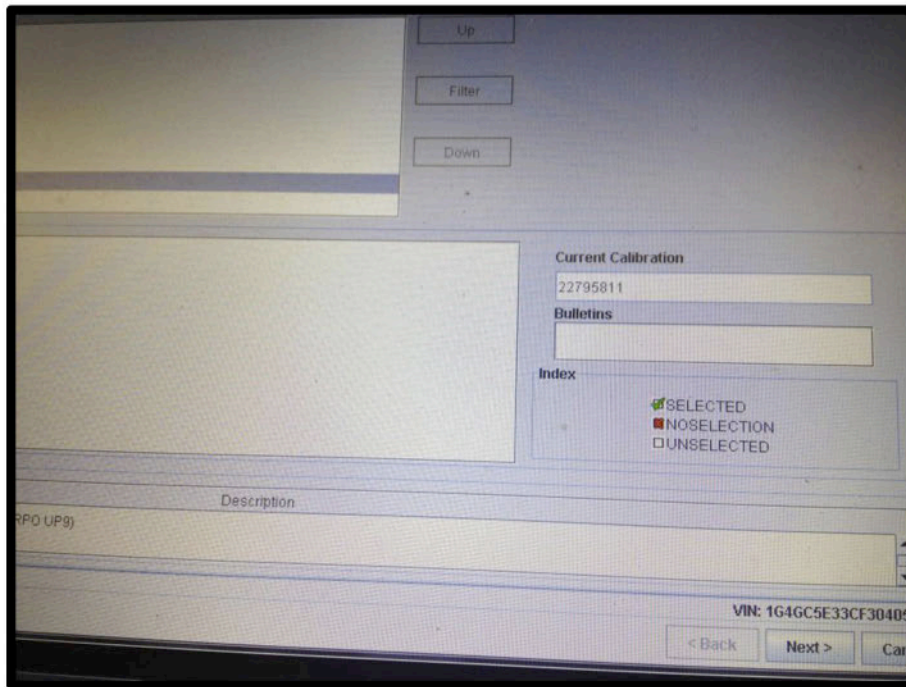


7. Select the proper radio. For non navigation equipped vehicles, select UFU + UP9 (or equivalent). This is the MyLink/Intellilink Radio. For navigation radios make sure to select accordingly.

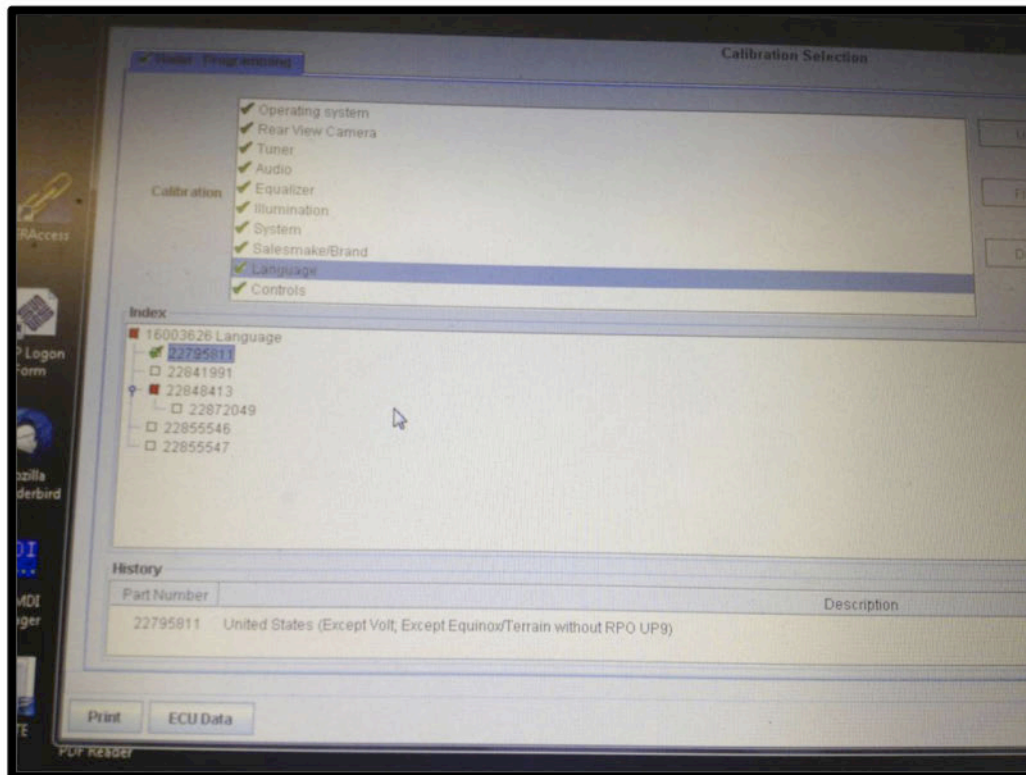


8. We will now go through and select the proper calibration codes. The only one that will need to change is the camera selection. Make sure you pay attention to the current calibration codes show on the right side of the screen and reselect the current codes on all options except camera. For the camera selection, select the option for vehicles with rear view camera.

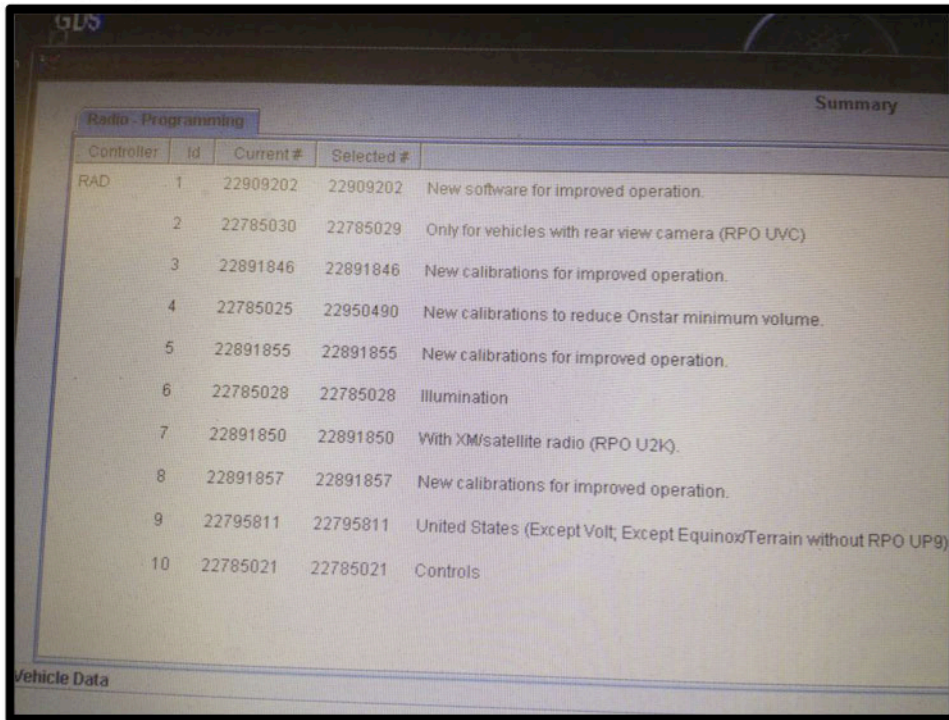




9. Make sure you go down the list until all options are check marked green



10. You will get a calibration verification screen showing all calibrations about to be programmed.



11. Select yes to program selected calibration codes. Once program is loaded select to clear DTC's and then test to make sure the screen now switches when placed into reverse.

Step 2: Use a Plastic Trim Removal Tool, 7 or 10mm Socket, and/ or Phillips Screwdriver to remove garnish and fasteners securing the Radio. Remove radio.



Step 3: Pull the radio out to disconnect the vehicles 20-pin connector. Caution: Be careful not to disconnect antenna or other connection to back of radio.

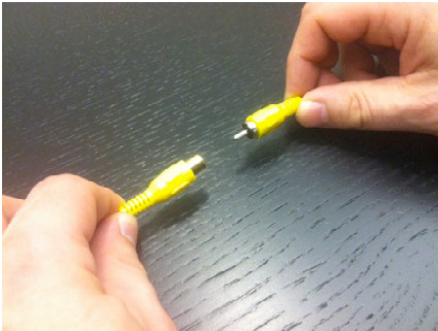


INSTALLATION INSTRUCTIONS

Step 4: Plug the vehicles 20-pin radio connector into the female 20-pin connector of supplied Display Harness.

Step 5: Plug the male 20-pin connector of supplied Display Harness into the radio.

Step 6: Connect Power Harness male RCA connector to Display Harness female RCA connector.



Step 7: Using a vehicle specific service guide/wiring diagram and a multi-meter verify 12v Ignition power source. Red wire of power harness connects to 12v+ Ignition power and Black wire of power harness to Black chassis ground nut or wire.

RECOMMENDED: Solder wires and cover with Heat Shrink Tubing or use T-taps as an optional connection method.

Step 8: Connect Chassis Harness to supplied Power Harness RCA and power plugs.



Step 9: Test Camera Picture. Once picture is verified proceed to Camera installation.

Step 10: Determine Camera location. Place template in desired position to confirm fitment. (IMPORTANT: Some states prohibit items blocking the license plate; check local authorities to confirm legal status for your application).

Step 11: Mark Camera location with supplied template, Center Punch the mark, and use supplied 19mm Hole Saw to drill Camera mounting hole. NOTE: If your vehicle has a liftgate panel/ trunk trim cover, it must be removed.



Step 12: (If necessary) Use a 1/4" Drill Bit to make a pass through hole in any obstructing panel for the Camera Harness connector.

Step 13: Insert connector end of the Camera Harness through the hole(s) you drilled. RECOMMENDED: Protect Camera Harness from any sharp metal edges by applying a small amount of silicone caulk or a rubber grommet (shown below) to any area that may come into contact with metal.



Step 14: Route Camera and/ or Chassis Harness along existing wiring and secure using Wire Ties or Electrical Tape.

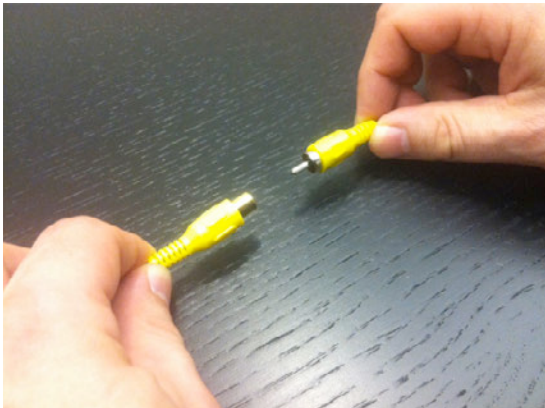
IMPORTANT: Ensure harnesses move freely with the trunk or liftgate.

Step 15: Connect Camera Harness to supplied Chassis Harness. The optimal location for this junction may occur at the top of the liftgate or inner trunk edge.



Step 16: Route Chassis Harness forward. It may be necessary to remove sill plates, pillar covers, side panels, etc. Use a Plastic Trim Removal Tool to avoid damage to trim pieces.

Step 17: Connect Power Harness male RCA connector to Display Harness female RCA connector.



INSTALLATION INSTRUCTIONS

Step 18: Connect Chassis Harness to supplied Power Harness RCA and power plugs.



Step 19: Use Wire Ties or Electrical Tape to secure Chassis Harness and Jumper Harness RCA and power connections.

Step 20: Coil any excess Chassis Harness and secure it and the Jumper Harness to existing vehicle wiring with Wire Ties or Electrical Tape.

Step 21: Reinstall radio display and inspect that all connections are proper and secure.

Step 22: Test system. Close trunk or liftgate and clear all removed items from around the vehicle before starting the vehicle. Next, shift into Reverse and check radio display for the camera image.

Step 23: (If necessary) Adjust camera aim. Reposition camera to the desired viewing angle.

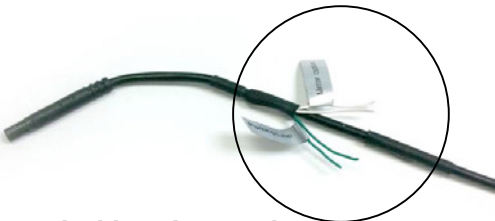
Step 24: Reassemble vehicle. Follow your disassembly steps in reverse order, taking care not to bind the harness wiring when reinstalling trim.

CAMERA OPTIONS

The camera offers grid lines or non grid lines and mirror image or non mirror image options.

Grid line options: Default setting **displays grid lines**. To remove the grid line display, connect the two green wires near the end of the Camera Harness.

Display options: Default setting is **mirror image display** (i.e., words and letters appear backwards as in a mirror) for **rearward facing camera** (rear view) installation. To change to **non mirror image display** for **forward facing camera** (front view) connect the two white wires near the end of the Camera Harness.



Green and white wires on the Camera Harness.