

## UTV/Rockcrawler Quad Camera and DVR Monitor (Kit #SUTV-1040)

**Please read thoroughly before starting installation and check that kit contents are complete.**

### **Items Included in the Kit:**

Roll Bar Mounts (1.5" 1.75" 2")  
7" Quad Screen Monitor with DVR  
IR Remote  
Monitor Sun Shade  
Left & Rear Side View Camera's W/Cables  
Front Camera W/Extension cable  
Rear Infrared Camera W/Extension cable  
SUTV-1040 Miscellaneous Parts Package

### **Tools & Supplies Needed:**

Plastic Trim Removal Tool  
Phillips Screwdriver  
Center Punch/Scribe Tool  
Power Drill  
1/2" Drill Bit  
Wire Ties  
Soldering Iron & Solder (Recommended)  
Tape or Heat Shrink Electrical Tubing

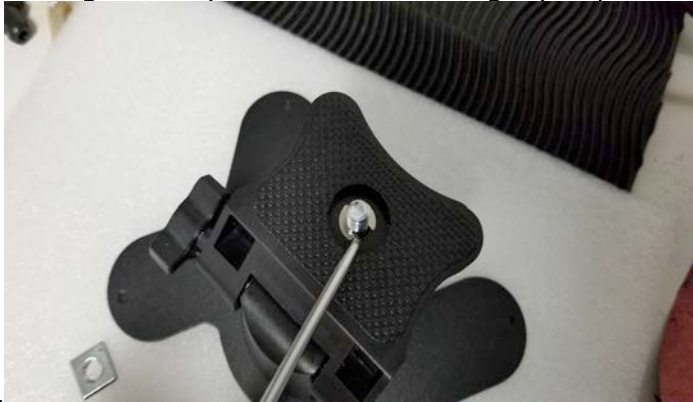


## Safety Precautions:

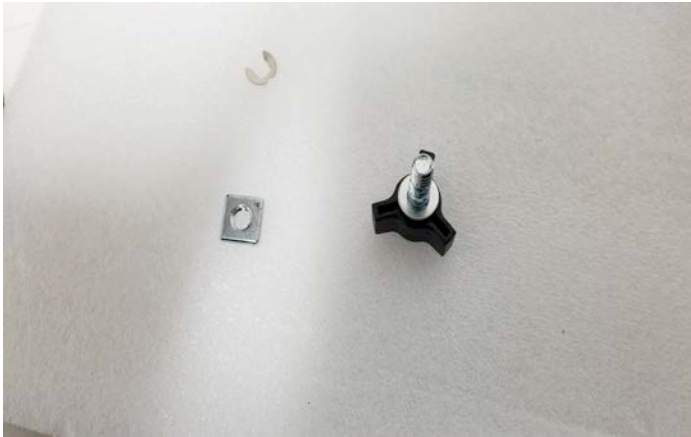
- Work in well ventilated area that is clear of obstructions.
- Secure vehicle with tire chucks in both front and rear of tires.
- Turn vehicle accessories OFF and ensure ignition key is in OFF position.
- Wear safety goggles and snug fitting clothes.
- Use tools only for their intended purpose and which are in good repair.
- Only perform this task if confidence, skill, and physical ability permit.

**NOTE: We strive to provide accurate and up-to-date installation instructions.**  
**For additional assistance please call Brandmotion Technical Assistance at (734) 619-1250 then dial 2.**

**Step 1:** Using a small pick tool hold retaining clip in place and unscrew bolt and remove from universal



mount.



**Brackets:** The SUTV kit comes with 3 different sizes Monitor mounting brackets depending on your mounting application.



**Step 2:** After choosing the proper size use supplied foam and apply to inner ring of bracket. Then follow pictures to assemble bracket and mount







**Left & Right-Side View Camera Installation:** When installing side view cameras always make sure the red arrow is facing upwards.

**Step 1:** Disassemble for mounting.



**Step 2:** Using rubber gasket find good mounting location and drill hole for routing harness.



**Step 3:** Align Camera to desired location and mount using Front & Rear mounting holes.



**Step 4:** Reassemble side view Camera. Follow your disassembly steps in reverse order





**Front & Rear Camera Installation:** For mounting the Front & Rear Cameras. Find a flat and level Mounting location. Clean the area with Alcohol prep cleaner and mount to desired location. Mounting bracket can be mounted either direction as long as arrow faces up on Camera.

**Front Camera:** Front Camera Mounting.



**Rear Camera:** Rear Camera Mounting.



**Vehicle Wiring:** When wiring the kit on some applications there might not be access to some of the trigger wires. (Left, Right turn signals, Reverse, etc.) When trigger wires are not available use toggle switch to trigger input. Trigger wires are only needed for auto switching inputs. Can Manual switch video inputs on monitor.

## **SUTV Kit Wiring**

**Red ACC Power**

**Black Ground**

**Trigger 1 Video 1**

**Trigger 2 Video 2**

**Trigger 3 Video 3**

**Trigger 4 Video 4**



**Side View Camera Wiring:** Each Side View Camera needs 12-volt accessory power and Chassis ground from a clean non-painted surface. Also needs the composite video output cable ran to Video inputs on monitor. (1-4). Can be hooked up to desired orientation on video screen. All outside connections please use supplied heat shrink as to not VOID WARRANTY.



**Front & Rear Camera wiring:** Both Cameras needs 12-volt accessory power and Chassis ground from a clean non-painted surface. Also needs the composite video output cable ran to Video inputs on monitor. (1-4). Can be hooked up to desired orientation on video screen. All outside connections please use supplied heat shrink as to not VOID WARRANTY.

